

(12) **United States Patent**
Wood et al.

(10) **Patent No.:** **US 8,457,113 B2**
(45) **Date of Patent:** ***Jun. 4, 2013**

(54) **BRANCH CALLING AND CALLER ID BASED CALL ROUTING TELEPHONE FEATURES**

4,238,851 A 12/1980 Takahashi et al.

(Continued)

(75) Inventors: **Samuel F. Wood**, Los Altos, CA (US);
Jerry A. Klein, Los Altos, CA (US);
Margaret Susan Asprey, Los Altos, CA (US)

FOREIGN PATENT DOCUMENTS

DE	19813179	9/1999
EP	0 578 374	1/1994

(Continued)

(73) Assignee: **Telemaze LLC**, Los Altos, CA (US)

OTHER PUBLICATIONS

(*) Notice: Subject to any disclaimer, the term of this patent is extended or adjusted under 35 U.S.C. 154(b) by 85 days.

Dowden, Douglas C., et al., "The Future of Network-Provided Communications Services," *Bell Labs Technical Journal*, Jul.-Sep. 2000, pp. 3-10.

This patent is subject to a terminal disclaimer.

(Continued)

(21) Appl. No.: **12/821,119**

Primary Examiner — Creighton Smith

(22) Filed: **Jun. 22, 2010**

(74) *Attorney, Agent, or Firm* — DLA Piper LLP (US)

(65) **Prior Publication Data**

(57) **ABSTRACT**

US 2010/0254376 A1 Oct. 7, 2010

A caller ID based call routing feature is described for blocked and non-blocked caller ID's. A processing system in the public switched telephone network (PSTN) receives first identifying information for identify the source of a telephone call and associates additional information stored in a memory with the first identifying information. The additional information may be information about the calling party initially downloaded to the memory by a subscriber. Once retrieved from the memory by the processing system, the additional information may then be transmitted to the subscriber via the Internet for display on a monitor or to the subscriber's telephone for display on a telephone display. Another feature described is a branch calling feature where the subscriber may program a processing system within the PSTN to forward an incoming call to two or more end units (e.g., telephones) simultaneously. If the call at an end unit is answered, answer supervision signaling is transmitted back to the processing system which then terminates all other calls. The processing system then connects the calling party to the subscriber. The branch calling may be made for any combination of local, long distance, and cellular telephone numbers.

Related U.S. Application Data

(60) Continuation of application No. 11/948,965, filed on Nov. 30, 2007, now Pat. No. 7,764,777, which is a division of application No. 10/426,279, filed on Apr. 30, 2003, now Pat. No. 7,324,635, which is a continuation-in-part of application No. 09/565,565, filed on May 4, 2000, now Pat. No. 6,574,328.

(51) **Int. Cl.**
H04L 12/66 (2006.01)

(52) **U.S. Cl.**
USPC **370/352; 379/220.01**

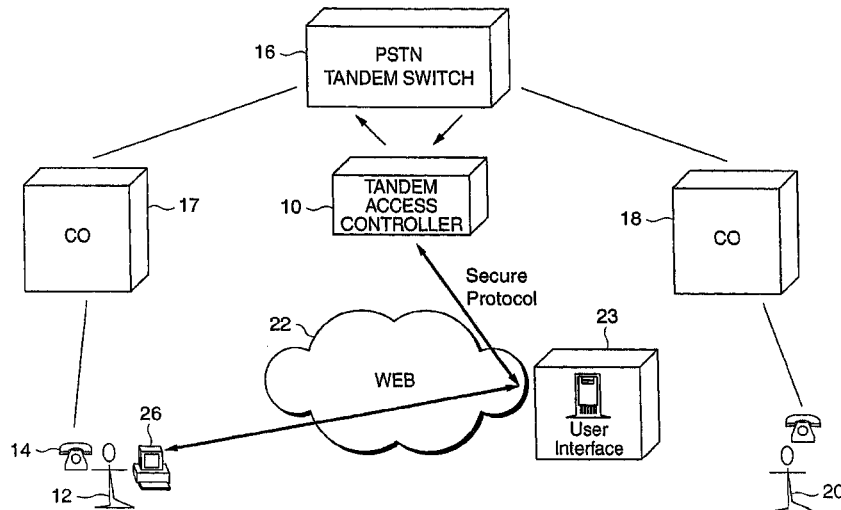
(58) **Field of Classification Search**
USPC **370/352; 379/220.01**
See application file for complete search history.

(56) **References Cited**

U.S. PATENT DOCUMENTS

4,100,377 A 7/1978 Flanagan

182 Claims, 11 Drawing Sheets



U.S. PATENT DOCUMENTS								
4,310,726	A	1/1982	Asmuth	179/18	5,396,542	A	3/1995	Alger
4,313,035	A	1/1982	Jordan et al.		5,420,858	A	5/1995	Marshall et al.
4,348,554	A	9/1982	Asmuth		5,422,882	A	6/1995	Hiller et al.
4,555,982	A	12/1985	Goubaud		5,423,003	A	6/1995	Berteau
4,569,041	A	2/1986	Takeuchi et al.		5,426,636	A	6/1995	Hiller et al.
4,608,685	A	8/1986	Jain et al.		5,428,607	A	6/1995	Hiller et al.
4,611,094	A	9/1986	Asmuth et al.		5,428,616	A	6/1995	Field et al.
4,611,096	A	9/1986	Asmuth et al.		5,428,663	A	6/1995	Grimes et al.
4,630,260	A	12/1986	Toy et al.		5,430,719	A	7/1995	Weisser, Jr.
4,630,262	A	12/1986	Callens et al.		5,434,913	A	7/1995	Tung et al.
4,661,947	A	4/1987	Lea et al.		5,436,898	A	7/1995	Bowen et al.
4,674,082	A	6/1987	Flanagin et al.		5,438,614	A	8/1995	Rozman et al.
4,679,190	A	7/1987	Dias et al.		5,444,709	A	8/1995	Riddle
4,679,191	A	7/1987	Nelson et al.		5,448,623	A	9/1995	Wiedeman et al.
4,707,831	A	11/1987	Weir et al.		5,452,289	A	9/1995	Sharma et al.
4,715,026	A	12/1987	Eberspaecher		5,453,986	A	9/1995	Davis et al.
4,723,238	A	2/1988	Isreal et al.		5,455,853	A	10/1995	Cebulka et al.
4,757,497	A	7/1988	Beierle et al.		5,457,684	A	10/1995	Bharucha et al.
4,761,779	A	8/1988	Nara et al.		5,469,500	A	11/1995	Satter et al. 379/201
4,771,425	A	9/1988	Baran et al.		5,471,470	A	11/1995	Sharma et al.
4,815,071	A	3/1989	Shimizu		5,471,616	A	11/1995	Johnson et al.
4,819,228	A	4/1989	Baran et al.		5,479,411	A	12/1995	Klein
4,862,451	A	8/1989	Closs et al.		5,485,457	A	1/1996	Aramaki
4,866,704	A	9/1989	Bergman		5,495,567	A	2/1996	Iizawa et al.
4,872,159	A	10/1989	Hemmady et al.		5,497,339	A	3/1996	Bernard
4,872,160	A	10/1989	Hemmady et al.		5,521,914	A	5/1996	Mavraganis et al.
4,885,739	A	12/1989	Read et al.		5,526,353	A	6/1996	Henley et al.
4,903,261	A	2/1990	Baran et al.		5,537,403	A	7/1996	Cloonan et al.
4,926,416	A	5/1990	Weik		5,541,917	A	7/1996	Farris
4,932,022	A	6/1990	Keeney et al.		5,544,161	A	8/1996	Bigham et al.
4,933,931	A	6/1990	Kokubo		5,544,163	A	8/1996	Madonna
4,953,158	A	8/1990	Schreur		5,544,164	A	8/1996	Baran
4,953,198	A	8/1990	Daly et al.		5,544,168	A	8/1996	Jeffrey et al.
4,958,341	A	9/1990	Hemmady et al.		5,553,063	A	9/1996	Dickson
4,962,497	A	10/1990	Ferenc et al.		5,557,658	A	9/1996	Gregorek et al.
4,969,184	A	11/1990	Gordon et al.		5,563,937	A	10/1996	Bruno et al.
4,970,721	A	11/1990	Aczel et al.		5,566,236	A	10/1996	McLampy et al.
4,973,837	A	11/1990	Bradbeer		5,568,475	A	10/1996	Doshi et al.
4,975,695	A	12/1990	Almond et al.		5,570,355	A	10/1996	Dail et al.
4,996,685	A	2/1991	Farese et al.		5,572,583	A	11/1996	Wheeler, Jr. et al.
5,008,929	A	4/1991	Olsen et al.		5,577,038	A	11/1996	Miyahara
5,014,266	A	5/1991	Bales et al.		5,577,041	A	11/1996	Sharma et al.
5,018,136	A	5/1991	Gollub		5,579,308	A	11/1996	Humpleman
5,020,058	A	5/1991	Holden et al.		5,590,181	A	12/1996	Hogan et al.
5,022,071	A	6/1991	Mozer et al.		5,592,477	A	1/1997	Farris et al.
5,048,081	A	9/1991	Gavaras et al.		5,592,538	A	1/1997	Kosowsky et al.
5,051,983	A	9/1991	Kammerl		5,594,732	A	1/1997	Bell et al.
5,093,827	A	3/1992	Franklin et al.		5,596,579	A	1/1997	Yasrebi
5,115,431	A	5/1992	Williams et al.		5,600,643	A	2/1997	Robrock, II
5,150,357	A	9/1992	Hopner et al.		5,600,649	A	2/1997	Sharma et al.
5,157,662	A	10/1992	Tadamura et al.		5,602,991	A	2/1997	Berteau
5,197,067	A	3/1993	Fujimoto et al.		5,604,737	A	2/1997	Iwami et al.
5,208,806	A	5/1993	Hasegawa		5,606,594	A	2/1997	Register et al.
5,218,602	A	6/1993	Grant et al.		5,608,786	A	3/1997	Gordon
5,231,633	A	7/1993	Hluchyj et al.		5,613,069	A	3/1997	Walker
5,241,588	A	8/1993	Babson, III et al.		H1641	H	4/1997	Sharman
5,247,571	A	9/1993	Kay et al.		5,621,727	A	4/1997	Vaudreuil
5,268,900	A	12/1993	Hluchyj et al.		5,625,677	A	4/1997	Feiertag et al.
5,274,635	A	12/1993	Rahman et al.		5,628,004	A	5/1997	Gormley et al.
5,291,489	A	3/1994	Morgan et al.		5,631,897	A	5/1997	Pacheco et al.
5,297,191	A	3/1994	Gerszberg		5,640,446	A	6/1997	Everett et al.
5,301,189	A	4/1994	Schmidt et al.		5,646,945	A	7/1997	Bergler
5,305,308	A	4/1994	English et al.		5,650,999	A	7/1997	Dickson
5,311,582	A	5/1994	Davenport et al.		5,654,957	A	8/1997	Koyama
5,327,428	A	7/1994	Van As et al.		5,659,541	A	8/1997	Chan
5,341,374	A	8/1994	Lewen et al.		5,659,542	A	8/1997	Bell et al.
5,351,276	A	9/1994	Doll, Jr. et al.		5,673,262	A	9/1997	Shimizu 370/395
5,351,286	A	9/1994	Nici		5,680,437	A	10/1997	Segal
5,353,283	A	10/1994	Tsuchiya		5,684,799	A	11/1997	Bigham et al.
5,359,598	A	10/1994	Steagall et al.		5,689,553	A	11/1997	Ahuja et al.
5,365,521	A	11/1994	Ohnishi et al.		5,692,126	A	11/1997	Templeton et al.
5,379,293	A	1/1995	Kanno et al.		5,701,301	A	12/1997	Weisser, Jr.
5,381,405	A	1/1995	Daugherty et al.		5,706,286	A	1/1998	Reiman et al.
5,381,466	A	1/1995	Shibayama et al.		5,710,769	A	1/1998	Anderson et al.
5,383,183	A	1/1995	Yoshida		5,712,903	A	1/1998	Bartholomew et al.
5,384,840	A	1/1995	Blatchford et al.		5,712,908	A	1/1998	Brinkman et al.
5,390,184	A	2/1995	Morris		5,724,412	A	3/1998	Srinivasan
5,396,491	A	3/1995	Newman		5,727,057	A	3/1998	Emery et al.
					5,729,544	A	3/1998	Lev et al.

US 8,457,113 B2

5,732,074 A	3/1998	Spaur et al.	6,028,917 A	2/2000	Creamer et al.
5,732,078 A	3/1998	Arango	6,031,836 A	2/2000	Haserodt
5,732,216 A	3/1998	Logan et al.	6,031,904 A	2/2000	An et al.
5,737,320 A	4/1998	Madonna	6,041,325 A	3/2000	Shah et al.
5,737,331 A	4/1998	Hoppal et al.	6,044,403 A	3/2000	Gerszberg et al.
5,737,333 A	4/1998	Civanlar et al.	6,069,890 A	5/2000	White et al.
5,737,533 A	4/1998	De Hond	6,075,992 A	6/2000	Moon et al.
5,740,164 A	4/1998	Liron	6,078,581 A	6/2000	Shtivelman et al.
5,740,231 A	4/1998	Cohn et al.	6,084,584 A	7/2000	Nahi et al.
5,742,596 A	4/1998	Baratz et al.	6,094,478 A	7/2000	Shepherd et al.
5,742,905 A	4/1998	Pepe et al.	6,104,800 A	8/2000	Benson
5,751,706 A	5/1998	Land et al.	6,118,780 A	9/2000	Dunn et al.
5,751,968 A	5/1998	Cohen	6,134,235 A	10/2000	Goldman et al.
5,754,641 A	5/1998	Voit et al.	6,141,341 A	10/2000	Jones et al.
5,764,628 A	6/1998	Davis et al.	6,161,128 A	12/2000	Smyk
5,764,736 A	6/1998	Shachar et al.	6,161,134 A	12/2000	Wang et al.
5,764,750 A	6/1998	Chau et al.	6,163,598 A	12/2000	Moore
5,764,756 A	6/1998	Onweller	6,167,040 A	12/2000	Haeggstrom
5,777,991 A	7/1998	Adachi et al.	6,175,860 B1	1/2001	Gaucher
5,790,538 A	8/1998	Sugar	6,185,285 B1	2/2001	Relyea et al.
5,793,762 A	8/1998	Penners et al.	6,188,688 B1	2/2001	Buskirk, Jr.
5,793,771 A	8/1998	Darland et al.	6,212,261 B1	4/2001	Meubus et al.
5,799,072 A	8/1998	Vulcan et al.	6,216,158 B1	4/2001	Luo et al.
5,799,154 A	8/1998	Kuriyan	6,240,097 B1	5/2001	Wesolek et al.
5,802,160 A	9/1998	Kugell et al.	6,243,373 B1	6/2001	Turock
5,805,587 A	9/1998	Norris et al.	6,259,692 B1	7/2001	Shtivelman et al.
5,805,588 A	9/1998	Petersen	6,262,978 B1	7/2001	Bruno et al.
5,806,057 A	9/1998	Gormley et al.	6,266,539 B1	7/2001	Pardo
5,809,022 A	9/1998	Byers et al.	6,278,707 B1	8/2001	MacMillan et al.
5,809,128 A	9/1998	McMullin	6,301,609 B1	10/2001	Aravamudan et al.
5,812,534 A	9/1998	Davis et al.	6,308,201 B1	10/2001	Pivowar et al.
5,815,505 A	9/1998	Mills	6,324,183 B1	11/2001	Miller et al.
5,818,912 A	10/1998	Hammond	6,327,258 B1	12/2001	Deschaine et al. 370/356
5,825,771 A	10/1998	Cohen et al.	6,334,126 B1	12/2001	Nagatomo et al.
5,828,666 A	10/1998	Focsaneanu et al.	6,337,858 B1	1/2002	Petty et al.
5,838,665 A	11/1998	Kahn et al.	6,339,594 B1	1/2002	Civanlar et al.
5,848,140 A	12/1998	Foladare et al. 379/201	6,359,892 B1	3/2002	Szlam
5,850,433 A	12/1998	Rondeau	6,381,323 B1	4/2002	Schwab et al.
5,859,972 A	1/1999	Subramaniam et al.	6,385,308 B1	5/2002	Cohen et al.
5,867,494 A	2/1999	Krishnaswamy et al.	6,404,764 B1	6/2002	Jones et al.
5,867,495 A	2/1999	Elliott et al.	6,411,615 B1	6/2002	DeGolia et al.
5,875,405 A	2/1999	Honda	6,411,965 B2	6/2002	Klug
5,878,113 A	3/1999	Bhusari	6,414,962 B1	7/2002	Hall et al.
5,878,418 A	3/1999	Polcyn et al.	6,418,198 B2	7/2002	Brablec et al.
5,881,060 A	3/1999	Morrow et al.	6,421,235 B2	7/2002	Ditzik
5,881,131 A	3/1999	Farris et al.	6,438,124 B1	8/2002	Wilkes
5,889,774 A	3/1999	Mirashrafi et al.	6,445,694 B1	9/2002	Swartz
5,894,473 A	4/1999	Dent	6,445,697 B1	9/2002	Fenton
5,894,595 A	4/1999	Foladare et al.	6,446,127 B1	9/2002	Shuster et al.
5,907,811 A	5/1999	Foladare	6,448,978 B1	9/2002	Salvador et al.
5,913,029 A	6/1999	Shostak	6,456,594 B1	9/2002	Kaplan et al.
5,915,008 A	6/1999	Dulman	6,456,601 B1	9/2002	Kozdon et al.
5,918,172 A	6/1999	Saunders et al.	6,459,780 B1	10/2002	Wurster et al.
5,922,047 A	7/1999	Newlin et al.	6,477,565 B1	11/2002	Daswani et al.
5,930,700 A	7/1999	Pepper et al.	6,477,576 B2	11/2002	Angwin et al.
5,933,490 A	8/1999	White et al.	6,483,902 B1	11/2002	Stewart et al.
5,933,778 A	8/1999	Buhrmann et al.	6,493,338 B1	12/2002	Preston et al.
5,938,757 A	8/1999	Bertsch	6,496,477 B1	12/2002	Perkins et al.
5,946,386 A	8/1999	Rogers et al.	6,498,797 B1	12/2002	Anerousis
5,946,684 A	8/1999	Lund	6,526,462 B1	2/2003	Elabd
5,953,392 A	9/1999	Rhie et al.	6,539,359 B1	3/2003	Ladd et al.
5,954,799 A	9/1999	Goheen et al.	6,577,622 B1	6/2003	Shuster et al.
5,958,016 A	9/1999	Chang et al.	6,584,490 B1	6/2003	Shuster et al.
5,960,340 A	9/1999	Fuentes	6,614,781 B1	9/2003	Elliott et al.
5,963,551 A	10/1999	Minko	6,643,282 B1	11/2003	Christie 370/352
5,970,059 A	10/1999	Ahopelto et al.	6,650,901 B1	11/2003	Shuster et al.
5,974,449 A	10/1999	Chang et al.	6,681,252 B1	1/2004	Shuster et al.
5,982,866 A	11/1999	Kowalski	6,697,461 B1	2/2004	Middleswarth et al.
5,991,291 A	11/1999	Asai et al.	6,731,630 B1	5/2004	Shuster et al.
5,991,310 A	11/1999	Katko 370/522	6,741,586 B1	5/2004	Shuster et al.
5,991,394 A	11/1999	Dezonno et al.	6,744,759 B1	6/2004	Sidhu
5,999,525 A	12/1999	Krishnaswamy et al.	6,775,264 B1	8/2004	Kurganov
6,005,870 A	12/1999	Leung et al.	6,775,284 B1	8/2004	Calvignac
6,006,272 A	12/1999	Aravamudan et al.	6,785,229 B1	8/2004	McNiff et al.
6,009,469 A	12/1999	Mattaway et al.	6,785,266 B2	8/2004	Swartz
6,012,088 A	1/2000	Li et al.	6,788,775 B1	9/2004	Simpson
6,014,437 A	1/2000	Acker et al.	6,795,429 B1	9/2004	Shuster et al.
6,020,916 A	2/2000	Gerszberg et al.	6,804,224 B1	10/2004	Shuster et al.
6,026,083 A	2/2000	Albrow et al.	6,807,257 B1	10/2004	Kurganov

6,816,582	B2	11/2004	Levine	WO	WO 97/44943	11/1997
6,822,957	B1	11/2004	Shuster et al.	WO	WO 97/46073	12/1997
6,853,714	B2	2/2005	Liljestrand et al.	WO	WO 97/47118	12/1997
6,856,616	B1	2/2005	Shuster et al.	WO	WO 97/50217	12/1997
6,857,021	B1	2/2005	Schuster et al.	WO	WO 97/50271	12/1997
6,857,072	B1	2/2005	Schuster et al.	WO	WO 97/50277	12/1997
6,870,830	B1	3/2005	Shuster et al.	WO	WO 98/00988	1/1998
6,914,897	B1	7/2005	Shuster et al.	WO	WO 98/04065	1/1998
6,937,699	B1	8/2005	Shuster et al.	WO	WO 98/04989	2/1998
6,937,713	B1	8/2005	Kung	WO	WO 98/10538	3/1998
6,956,941	B1	10/2005	Duncan et al.	WO	WO 98/11704	3/1998
7,069,291	B2	6/2006	Graves et al.	WO	WO 98/12860	3/1998
7,123,708	B1	10/2006	Gavillet 379/219	WO	WO 98/13974	4/1998
7,184,527	B1	2/2007	Lin	WO	WO 98/16051	4/1998
7,233,658	B2	6/2007	Koser	WO	WO 98/18238	4/1998
7,242,759	B1	7/2007	Sanchez et al. 379/219	WO	WO 98/18289	4/1998
7,272,115	B2	9/2007	Maher et al.	WO	WO 98/19425	5/1998
7,436,851	B1	10/2008	Chambers et al. 370/325	WO	WO 98/19445	5/1998
2001/0022784	A1	9/2001	Menon et al.	WO	WO 98/20701	5/1998
2001/0030950	A1	10/2001	Chen et al.	WO	WO 98/21911	5/1998
2003/0026403	A1	2/2003	Clapper	WO	WO 98/23067	5/1998
2003/0040325	A1	2/2003	Clark	WO	WO 98/23080	5/1998
2003/0095650	A1	5/2003	Mize	WO	WO 98/26543	6/1998
2003/0133553	A1	7/2003	Khakoo et al.	WO	WO 98/28885	7/1998
2003/0156693	A1	8/2003	Goldman	WO	WO 98/30007	7/1998
2003/0194078	A1	10/2003	Wood et al.	WO	WO 98/30008	7/1998
2004/0029568	A1	2/2004	DeLuca et al.	WO	WO 98/34391	8/1998
2004/0151294	A1	8/2004	Baniak et al.	WO	WO 98/34399	8/1998
2004/0240657	A1	12/2004	Camarillo 379/221.02	WO	WO 98/36543	8/1998
2004/0264673	A1	12/2004	Novack 379/221.11	WO	WO 98/37665	8/1998
2005/0041526	A1	2/2005	Esmersoy et al.	WO	WO 98/37688	8/1998
2005/0141500	A1	6/2005	Bhandari et al.	WO	WO 98/39897	9/1998
2005/0169445	A1	8/2005	Harris	WO	WO 98/42104	9/1998
2005/0207557	A1	9/2005	Dolan et al.	WO	WO 98/42107	9/1998
2007/0041526	A1	2/2007	Hill et al. 379/88.21	WO	WO 98/42146	9/1998
				WO	WO 98/47256	10/1998
				WO	WO 98/51063	11/1998
				WO	WO 99/12365	3/1999
				WO	WO 99/19988	4/1999
				WO	WO 99/20059	4/1999
				WO	WO 99/35802	7/1999
				WO	WO 99/45687	9/1999
				WO	WO 01/05078	1/2001
				WO	WO 01/24496	4/2001
				WO	WO 01/24498	4/2001
				WO	WO 01/24500	4/2001
				WO	WO 01/24501	4/2001
				WO	WO 01/24502	4/2001
				WO	WO 01/24503	4/2001
				WO	WO 01/84859	11/2001

FOREIGN PATENT DOCUMENTS

EP	0 704 788	4/1996		WO	WO 99/12365	3/1999
EP	0 738 093	10/1996		WO	WO 99/19988	4/1999
EP	0 789 470	8/1997		WO	WO 99/20059	4/1999
EP	0 794 650	9/1997		WO	WO 99/35802	7/1999
EP	0 797 373	9/1997		WO	WO 99/45687	9/1999
EP	0 824 298	2/1998		WO	WO 01/05078	1/2001
EP	0 829 995	3/1998		WO	WO 01/24496	4/2001
EP	0 841 831	5/1998		WO	WO 01/24498	4/2001
EP	0 847 176	6/1998		WO	WO 01/24500	4/2001
EP	0 851 653	7/1998		WO	WO 01/24501	4/2001
EP	0 853 411	A2	7/1998	WO	WO 01/24502	4/2001
EP	0 853 411	A3	7/1998	WO	WO 01/24503	4/2001
EP	0 858 202	8/1998		WO	WO 01/84859	11/2001
EP	0 866 596	9/1998				
EP	0 869 688	10/1998				
EP	0 872 998	10/1998				
EP	0 918 423	10/1998				
EP	0 881 848	A2	12/1998			
EP	0 898 431	2/1999				
GB	2 315 190	A	1/1998			
JP	10-023067	1/1998				
JP	10-051453	2/1998				
JP	10-164135	6/1998				
JP	10-164257	6/1998				
WO	WO 94/05111	3/1994				
WO	WO 95/34985	12/1995				
WO	WO 96/08935	3/1996				
WO	WO 96/15598	5/1996				
WO	WO 97/14234	4/1997				
WO	WO 97/14238	4/1997				
WO	WO 97/16007	5/1997				
WO	WO 97/22216	6/1997				
WO	WO 97/23078	6/1997				
WO	WO 97/27692	7/1997				
WO	WO 97/28628	8/1997				
WO	WO 97/29581	8/1997				
WO	WO 97/31492	8/1997				
WO	WO 97/33412	9/1997				
WO	WO 97/33421	9/1997				
WO	WO 97/38511	10/1997				
WO	WO 97/38551	10/1997				
WO	WO 97/39560	10/1997				

OTHER PUBLICATIONS

Foard, C.F., "Teaming Switches and Computers for Customer Applications," *AT&T Technology*, 1991; 6, 4; Research Library, pp. 32-38.

Foster, Robin Harris, "Computer-Telephone Integration Goes Global," *AT&T Technology*, Autumn 1995; 10, 3; Research Library, pp. 18-22.

Kozik, Jack, et al., "On Opening PSTN to Enhanced Voice/Data Services—The PINT Protocol Solution," *Bell Labs Technical Journal*, Jul.-Sep. 2000, pp. 153-165.

Lui, Anthony Y., et al., "The Enhanced Service Manager: A Service Management System for Next-Generation Networks," *Bell Labs Technical Journal*, Jul.-Sep. 2000, pp. 130-144.

Reisfield, E.S., "Customers Take Control of the AT&T Network," *AT&T Technology*, 1991; 6, 1; Research Library, pp. 44-48.

Sijben, Paul G., et al., "Bridging the Gap to IP Telephony," *Bell Labs Technical Journal*, Oct.-Dec. 1998, pp. 192-207.

RFC 3298 Service in the PSTN, Aug. 2002.

Implementing Automatic Location Update for Follow-Me database using VoIP and Bluetooth Technologies, *IEEE Transaction on computers*, vol. 51, No. 10, Oct. 2002.

New services demand integration, *Electronic Engineering Times*, Aug. 28, 2000, Iss. 1128; p. 110.

Natural Microsystems, M2 Presswire. Coventry: Aug. 18, 2000.

This pipe dream will come true: Voice Over Internet Protocol (VoIP) technology will make the phone Box something that really talks, Businessline, Chennai: Apr. 17, 2002.

Using Optimization to Achieve Efficient Quality of Service in Voice over IP Networks, IEEE 2003.

Broadsoft literature Broadworks overview, Copyright date 2002.

BroadSoft introduces industry's first complete service delivery and creation product suite for enhanced telephony services Broadworks, ATM Newsletter: Boston: Mar. 2000, vol. 9, Iss. 3, p. 13.

BroadSoft unveils advanced architecture for the rapid and cost effective delivery of enhanced communications services, Website, Aug. 25, 1999, Press releases, 3 pages.

ADC Telecommunications; SS7 New Net SS7 Tutorial; Copyright 1999.

Mary Carmichael, "Calls That Follow you Anywhere" Newsweek, Apr. 28, 2003, p. 43.

U.S. Appl. No. 09/406,322, Schuster et al., filed Sep. 27, 1999.

U.S. Appl. No. 09/515,798, Schuster et al., filed Feb. 29, 2000.

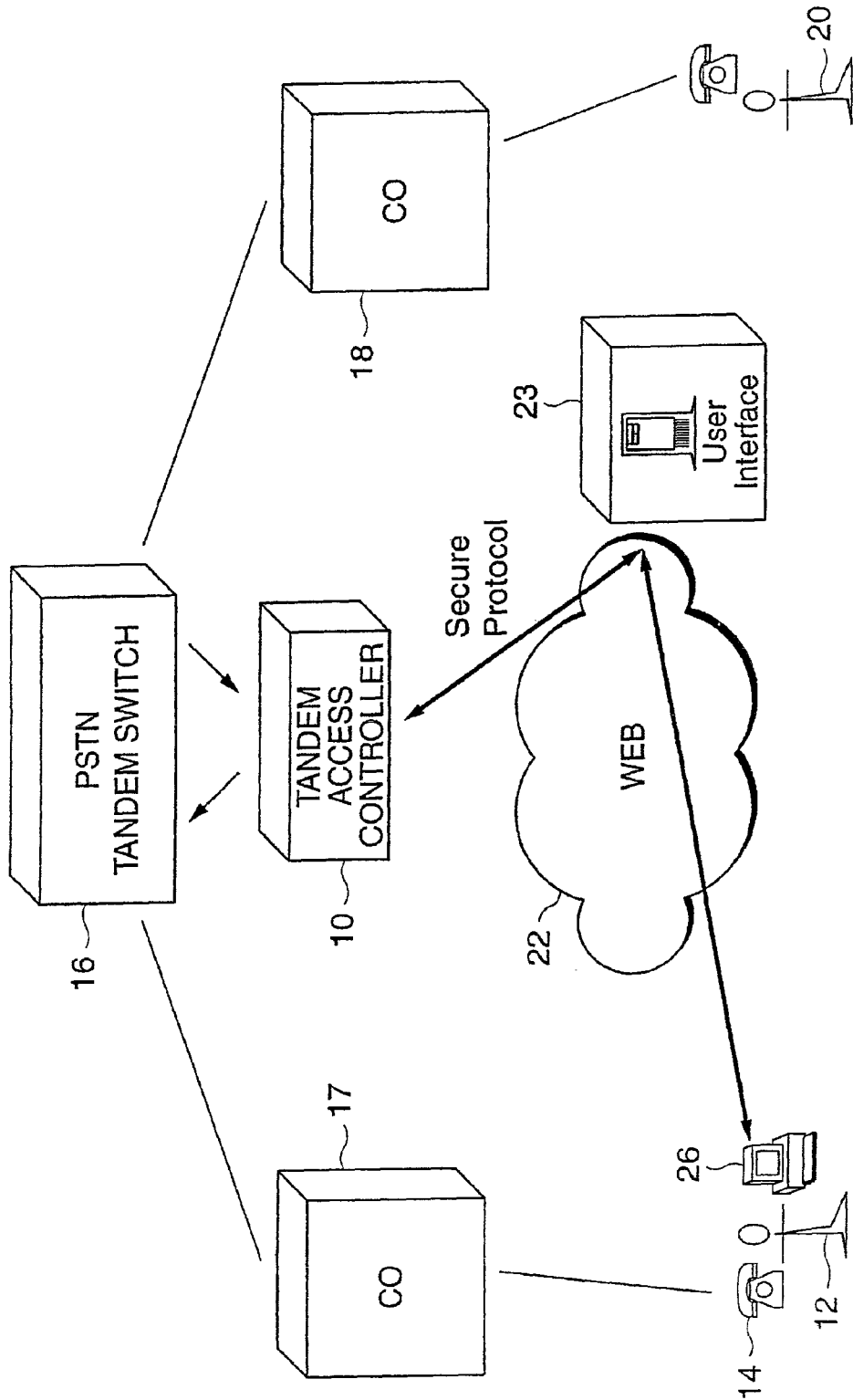


FIG. 1

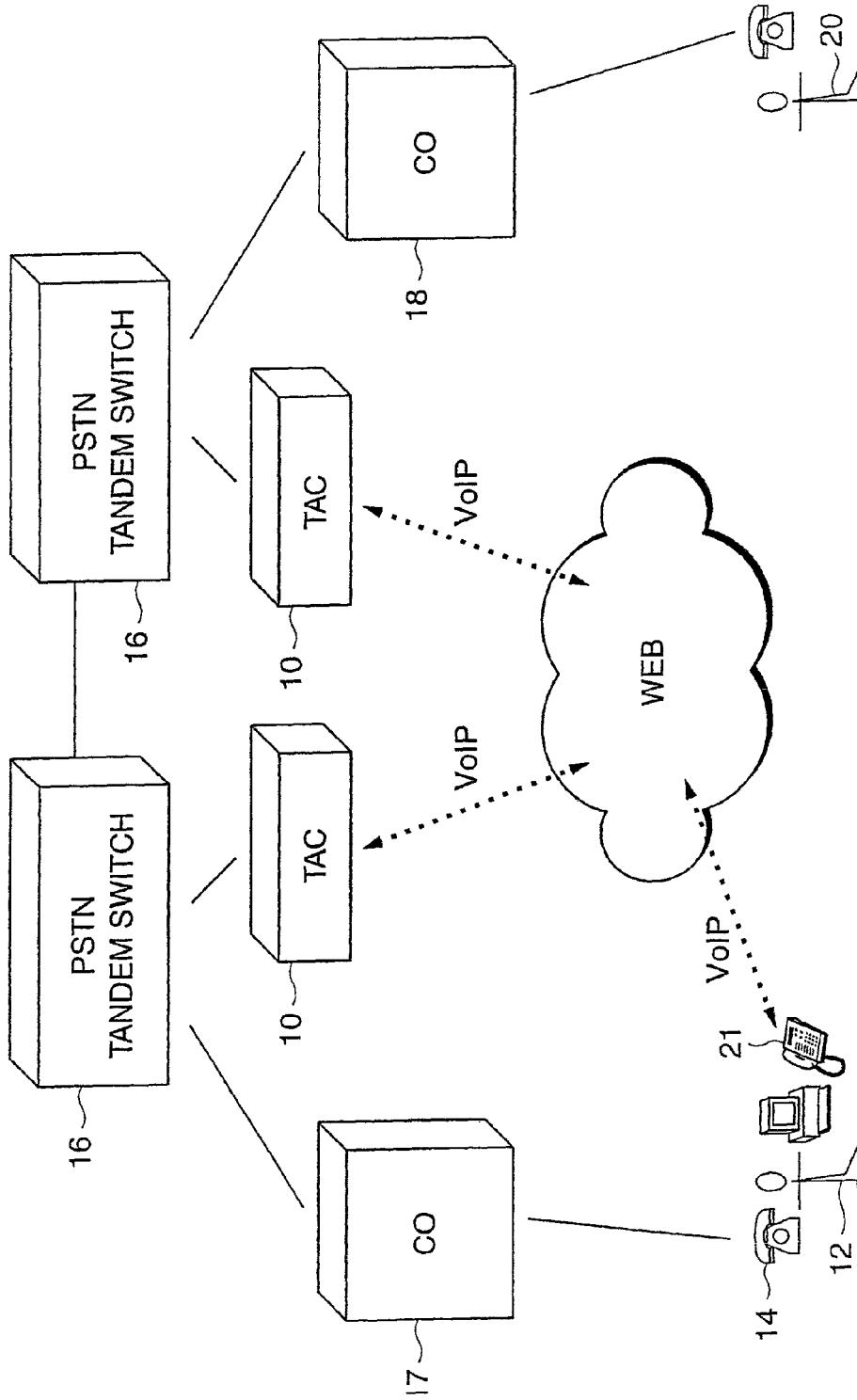
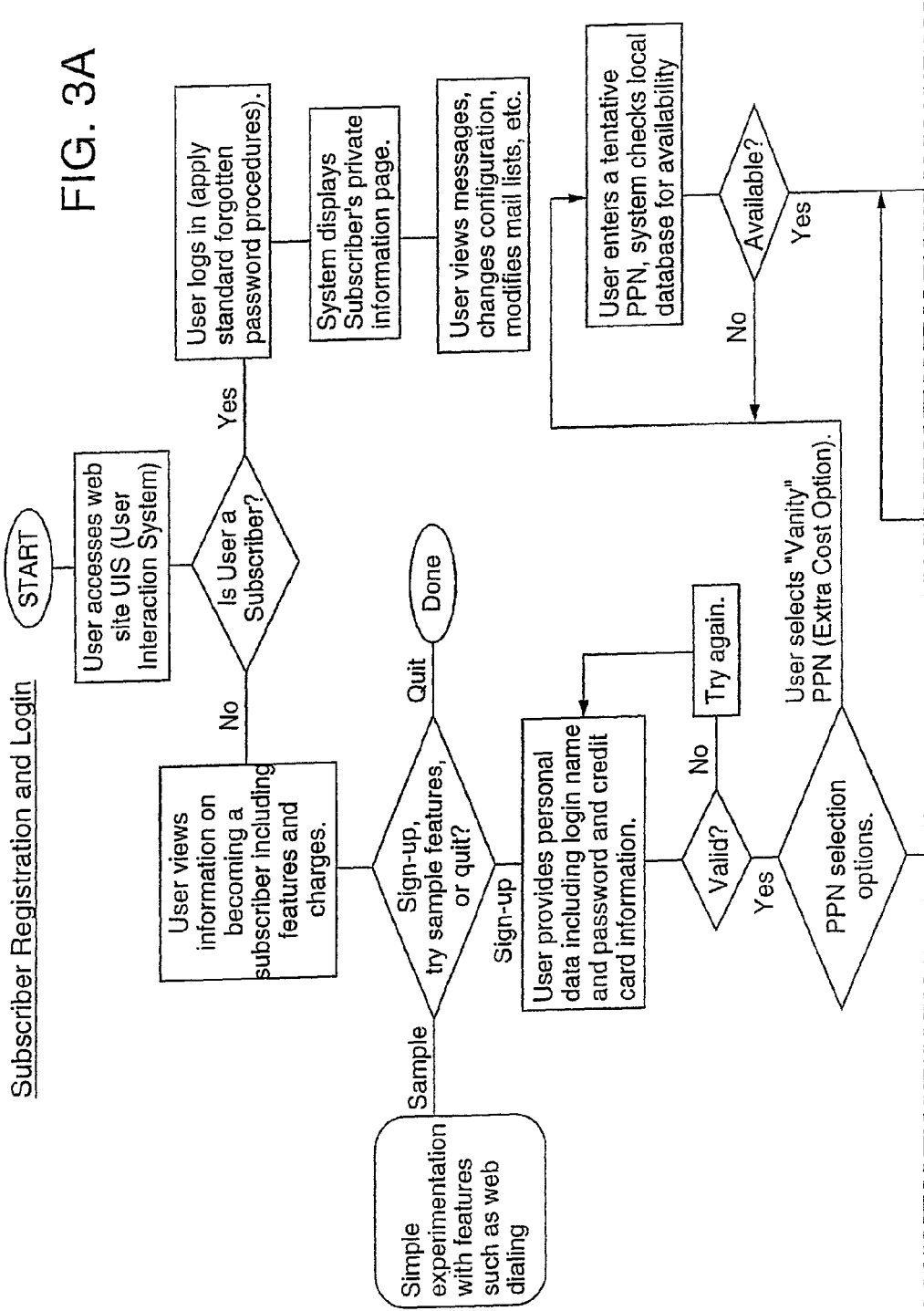
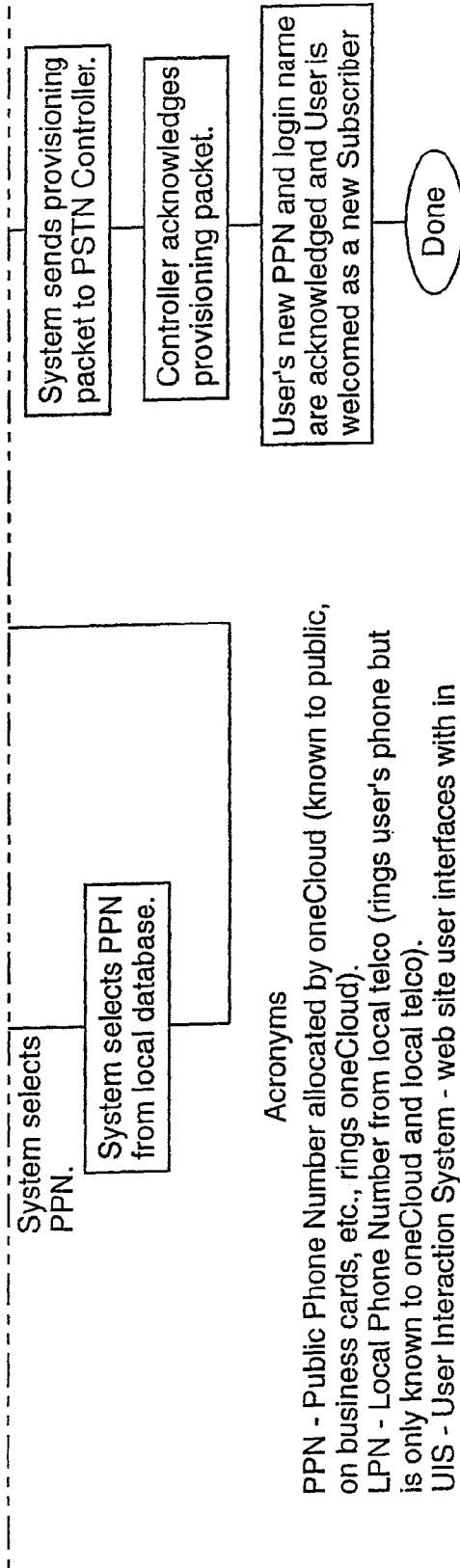


FIG. 2





Acronyms

PPN - Public Phone Number allocated by oneCloud (known to public, on business cards, etc., rings oneCloud).
 LPN - Local Phone Number from local telco (rings user's phone but is only known to oneCloud and local telco).
 UIS - User Interaction System - web site user interfaces with in order to control phone features.
 TAC - Tandem Acces Controller - System that directly accesses the PSTN.

FIG. 3B

FIG. 3A
FIG. 3B

FIG. 3

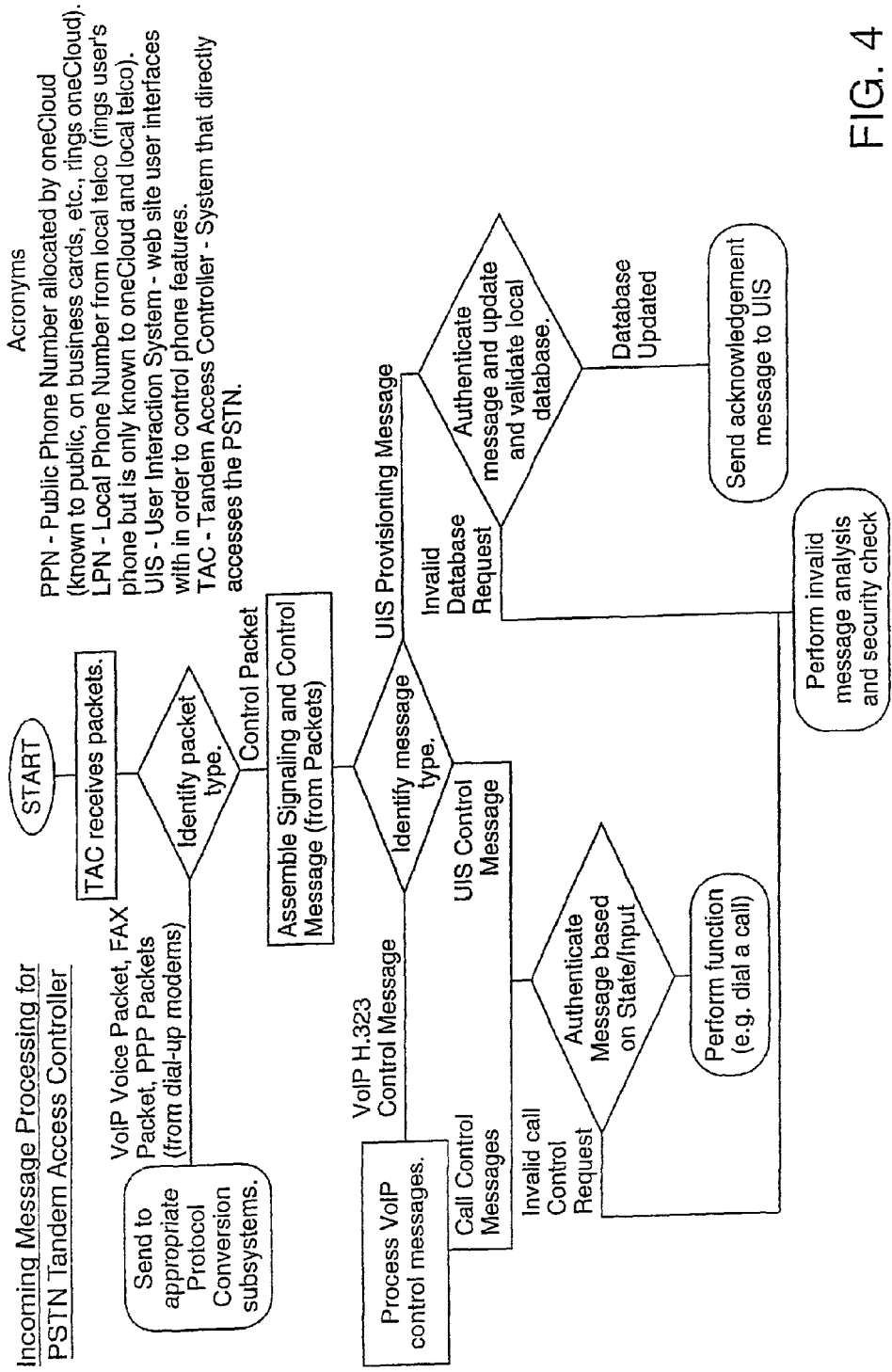


FIG. 4

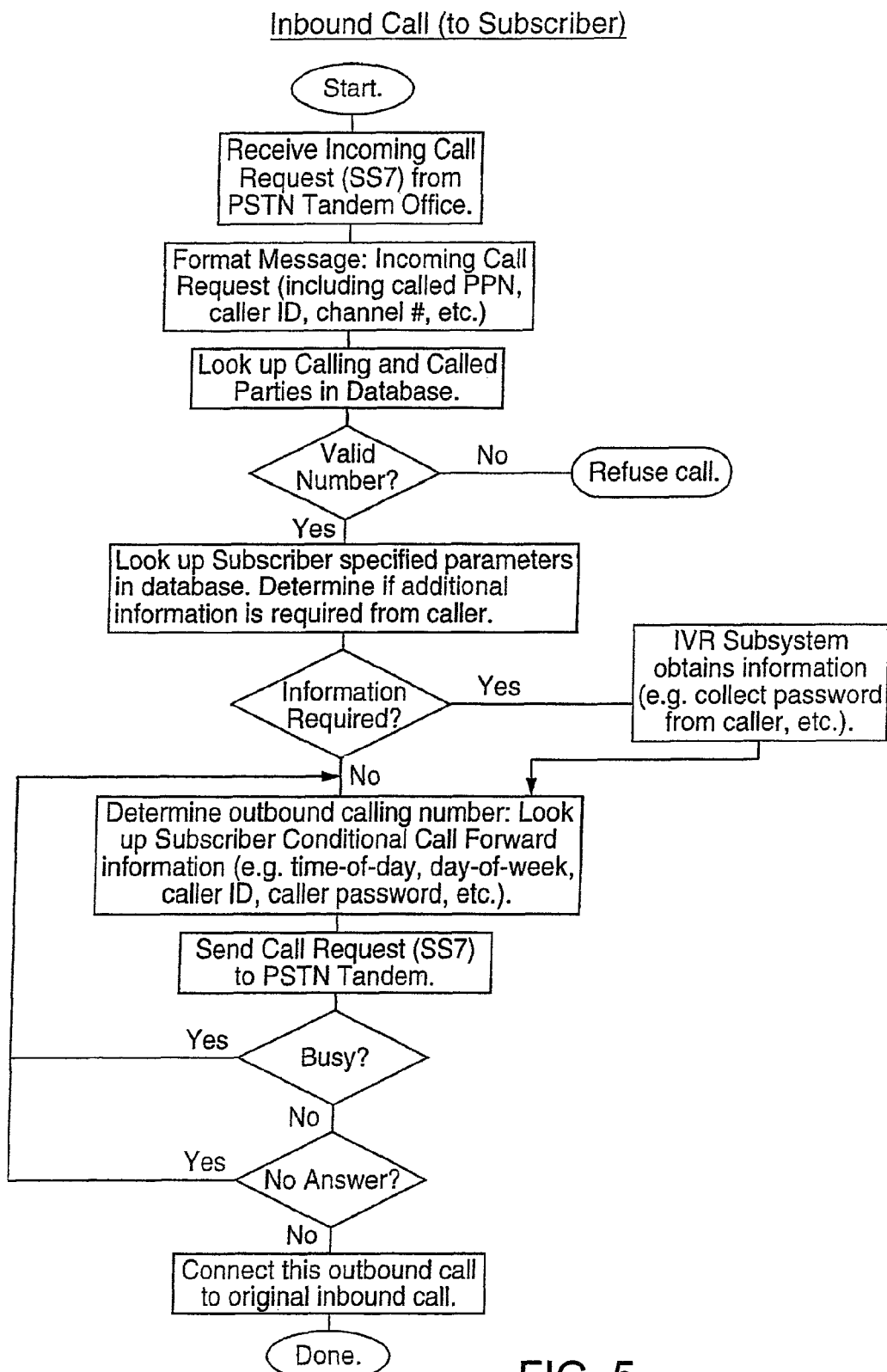


FIG. 5

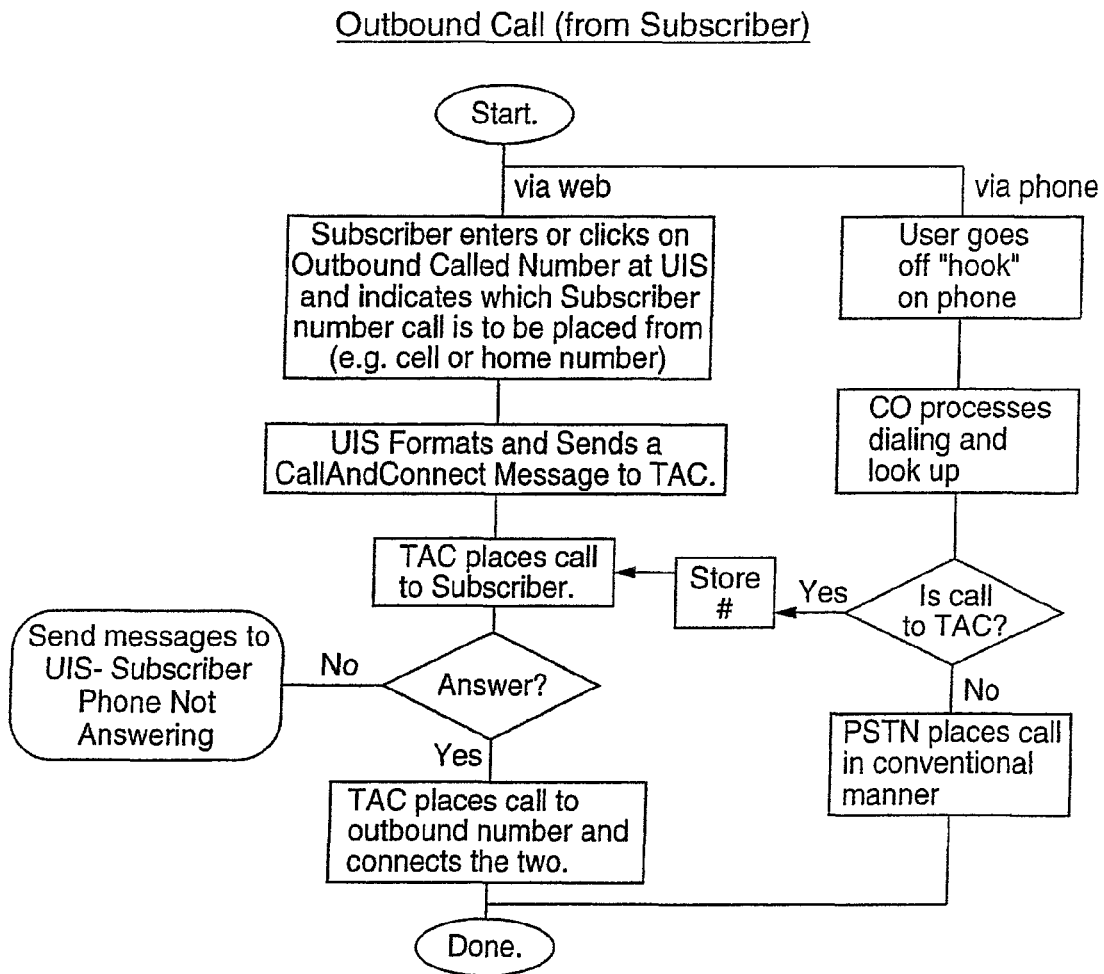


FIG. 6

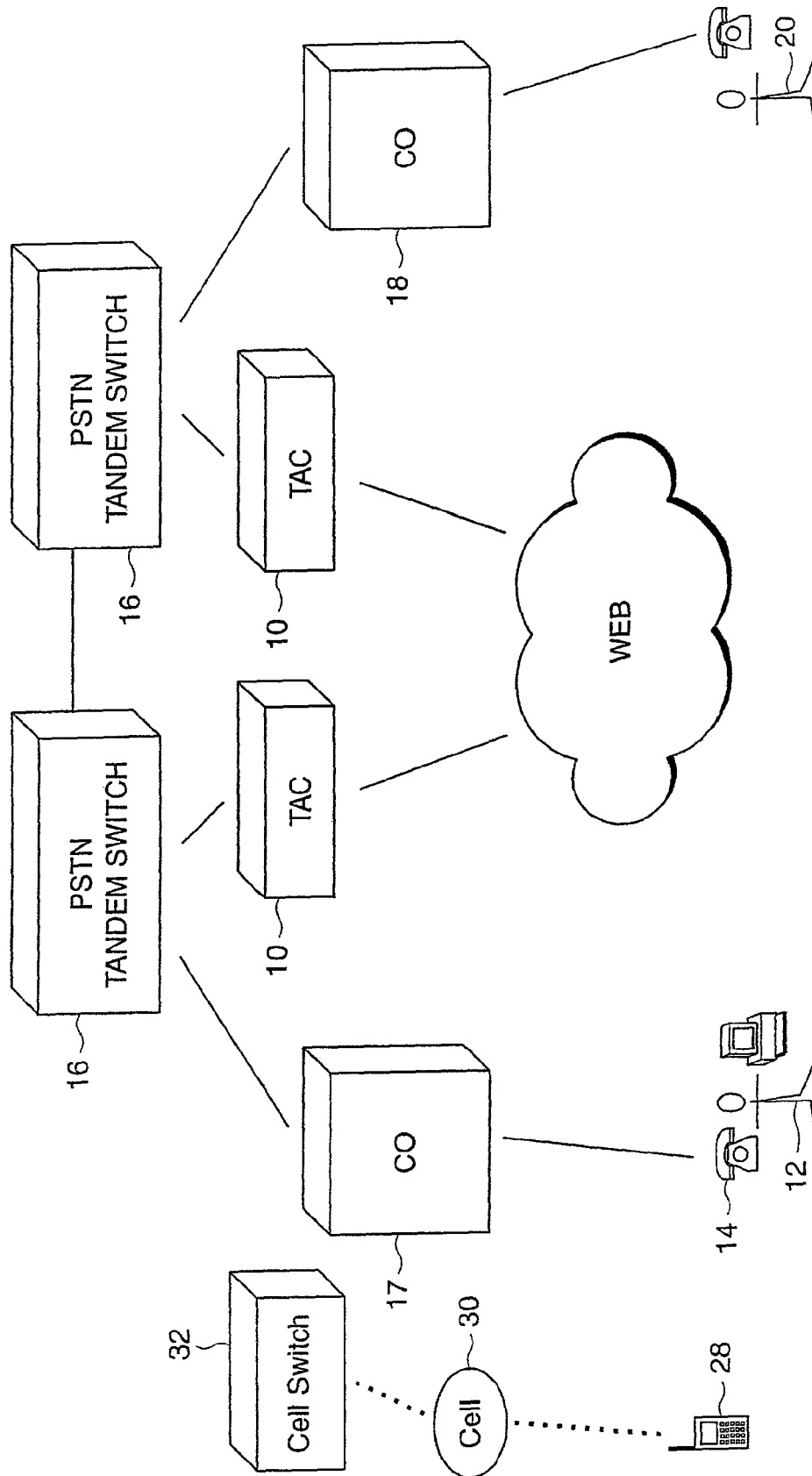


FIG. 7

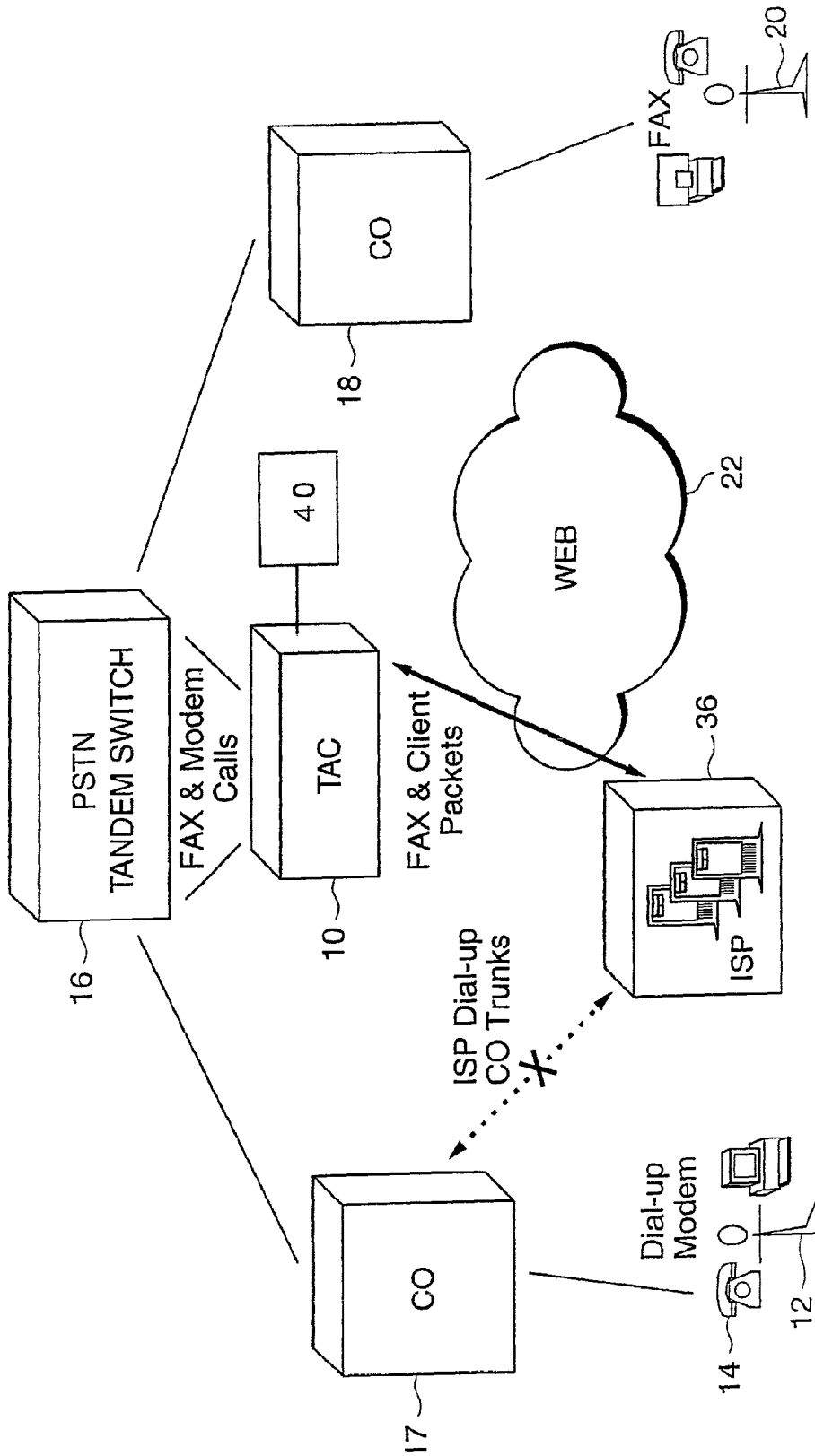


FIG. 8

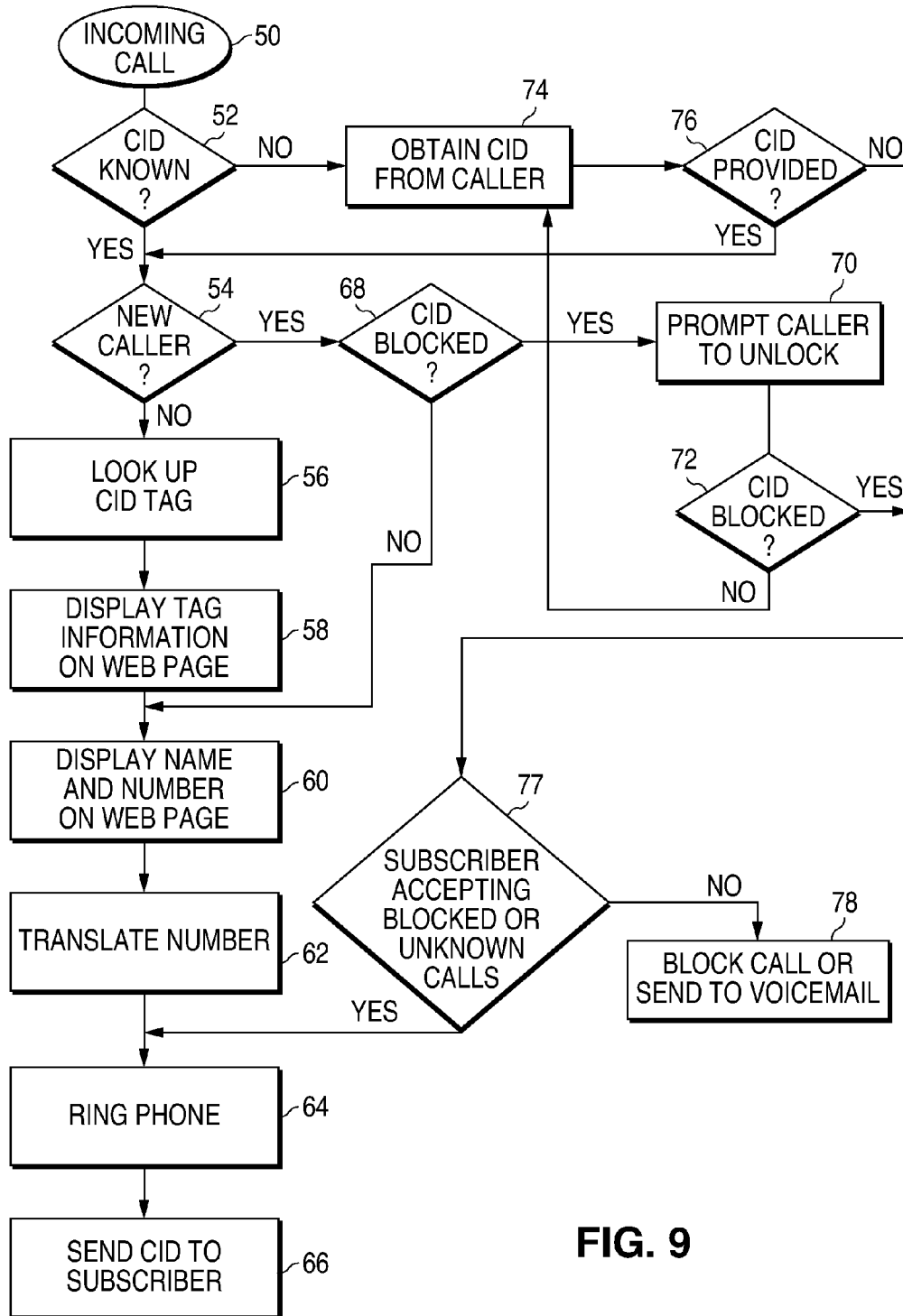


FIG. 9

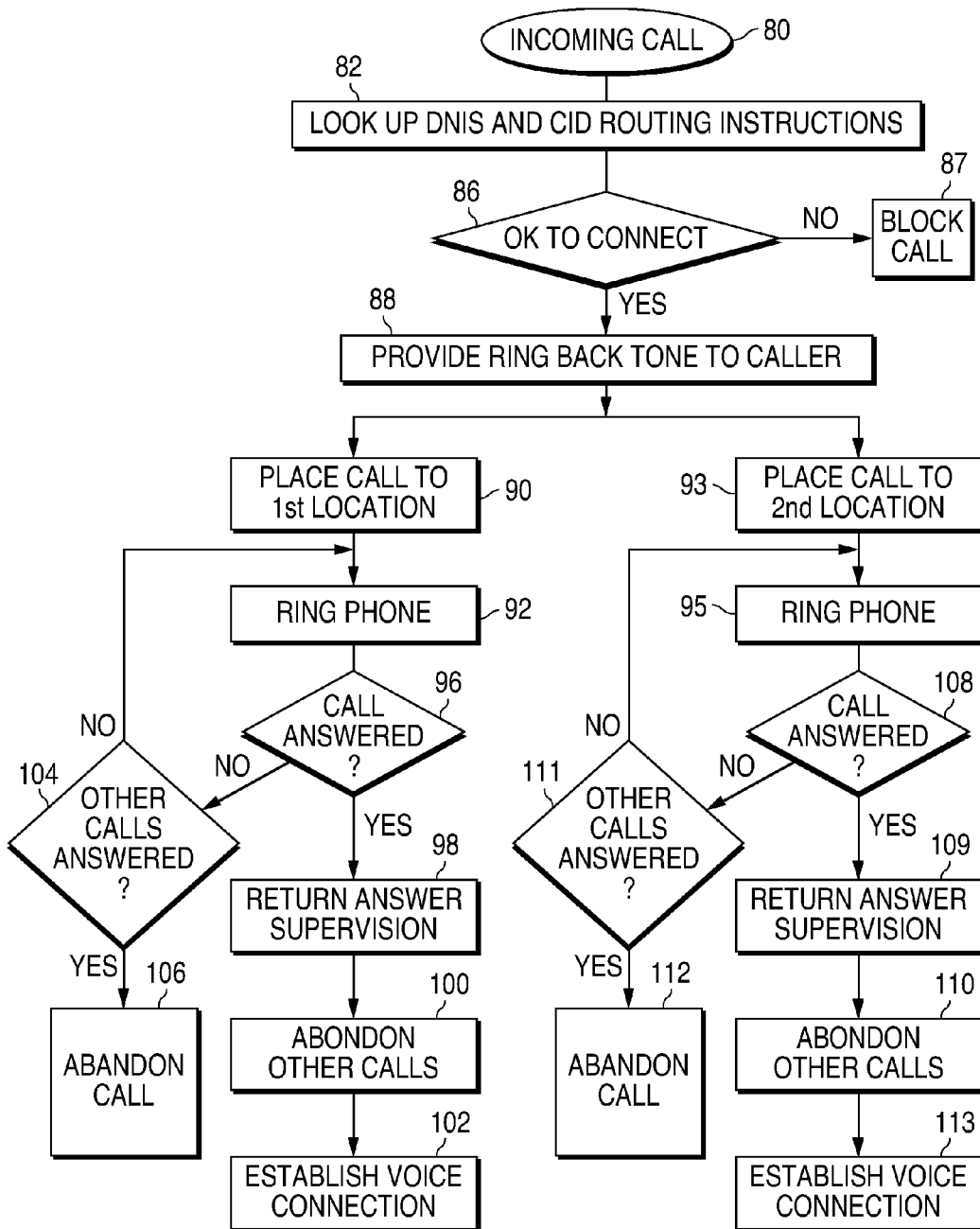


FIG. 10

1

BRANCH CALLING AND CALLER ID BASED CALL ROUTING TELEPHONE FEATURES

CROSS REFERENCE TO RELATED APPLICATIONS

This application is a continuation of U.S. application Ser. No. 11/948,965, filed Nov. 30, 2007, entitled "Branch Calling and Caller ID Based Call Routing Telephone Features," which is a divisional of U.S. application Ser. No. 10/426,279, filed Apr. 30, 2003, entitled "Branch Calling and Caller ID Based Call Routing Telephone Features," now U.S. Pat. No. 7,324,635, which is a continuation-in-part of U.S. application Ser. No. 09/565,565, filed May 4, 2000, entitled "Telephone Call Control System for the Public Switched Telephone Network," now U.S. Pat. No. 6,574,328. The subject matter in the above-identified co-pending and commonly owned applications is incorporated herein by reference.

FIELD OF THE INVENTION

This invention relates to telephone services and, in particular, to a system for allowing a subscriber to select features of the subscriber's telephone service and to various novel features that can be selected.

BACKGROUND

People have used various means for limiting interruptions due to the telephone. In the past, people used switchboards and secretaries to screen incoming, or inbound, calls. Voice mail systems took over some of this role both in the home and in the central office. Today, there are web-based companies managing 3rd-party call control, via the toll-switch network, which allow users to enter call control information through a web portal. There are also edge devices in each of the public telephone company's central offices which provide local control, but offer an extremely limited number of features and do not provide true 3rd-party call control.

The web-based toll systems provide good user interaction but they are not economical and cannot take advantage of local number portability because they do not provide local control and connectivity.

The Public Switched Telephone Network (PSTN) consists of a plurality of edge switches connected to telephones on one side and to a network of tandem switches on the other. The tandem switch network allows connectivity between all of the edge switches, and a signaling system is used by the PSTN to allow calling and to transmit both calling and called party identity.

Until now, optional features were provided by the local service telephone company (telco) through the edge switch at the central office (CO). It was not possible to provide optional features through any other means. Control of these features was done through the first party (calling party) or the second party (called party), or worse yet, manually by calling the business office.

In the past, numerous devices have been built that allow the connection of two lines together at an edge switch. These devices can be used to add features to a telephone network by receiving a call on one line and then dialing out on another line. The problem with these devices is that, because they are connected through an edge switch, transmission losses and impairments occur, degrading the overall connection. In addition, signaling limitations prevent full control, by the subscriber or the system, over the call.

2

A preferred embodiment of the inventive system described herein connects at the tandem, thereby eliminating these problems.

In the edge devices residing in the PSTN central offices, the 1st party (the calling party) has numerous features available (dialing options). The 2nd party (called party) also has options available such as call forwarding, but these features typically require access from the first or second party's device and are extremely awkward to program. The user interaction is not only awkward, it is limited and requires interaction with the telephone company to provision them. In other words, past systems for provisioning, meaning addition, modification, or control of telephone features, required a subscriber to make the feature selection through the telephone business office. Central office workers would then implement the provisioning under request of the business office.

Call Forwarding is one popular provision. There is significant transmission degradation for Call Forwarding to take place. The calling party pays for a call to the edge device, and the edge subscriber, the called party, pays for the call to the forwarding number. For enhanced inbound call control to occur, a direct 3rd-party call control means is needed.

A variety of services have arisen to address the problems mentioned above. Many of these systems allow the called party to make changes to his/her call forwarding attributes which do not allow direct 3rd-party call control. These services provide good user interaction, some via the internet, but they rely upon the toll network through the use of "800" numbers.

This requires the subscriber to pay by the minute and does not allow the subscriber to take advantage of number portability in order to obtain 3rd-party call control. There are other toll network mechanisms for remote call forwarding. For example, MCI offers a service where the customer can remotely change the forwarding target number for "800" numbers. Contacting the ultimate end-user before terminating the first incoming call is similar to the manner in which "800" credit calls and collect calls are processed, but these are not done at the local subscriber level.

In addition to these toll services, there are edge devices that perform some of the same services. Edge devices such as phones and PBXs that include voice mail, inter-active voice response, call forwarding, speed calling, etc., have been used to provide additional call control. These devices allow the phone user direct control over incoming and outgoing calls. The disadvantage of edge devices is that they add cost, degrade voice and transmission quality, can be difficult to program, are not easily programmed remotely, can require the user to pay for two lines, provide lower quality of service, and cannot provide the same level of functionality as a system that controls the PSTN directly. There are Voice Over Internet Protocol (VoIP) products emerging that provide better user interfaces and control but they do not take advantage and voice quality of the PSTN.

SUMMARY OF THE INVENTION

A system for allowing a subscriber to remotely control features is described herein along with various telephone features that may be programmed into the system. A subscriber may be any customer using the telephone service, in contrast to employees of the PSTN who may use special communication networks within the PSTN. Two such features are caller ID (CID) based call routing and branch calling. The system allows the subscriber to set up a feature where the CID signal is detected within the PSTN and automatically associated with stored information relating to the caller. The

3

stored information may have been previously entered into a memory within the PSTN by the subscriber via the world wide web. The CID signal may be also used to route the call to one of more forwarding numbers or to take any other action, such as blocking the call. This feature also allows the subscriber to use the CID signal to display certain information even though the caller may have her CID blocked.

Another feature described herein is referred to as branch calling, which allows a call to be forwarded to multiple telephones simultaneously, where the first telephone answered terminates the calling of the other telephones (or any other end units).

The preferred system described herein adds direct control of third party call control features, but does not suffer from any of the disadvantages listed above, and allows the subscriber to manage his/her telephone system in a dynamic and exceptionally useful manner that is not currently available through the existing PSTN. The system allows enhanced direct third-party call control features, such as selective call routing and remote dialing, to be added to the PSTN (Public Switched Telephone Network) using local call control and providing dynamic provisioning of the system by the subscriber. Direct 3rd-party control means that the ability to provision the 3rd-party features is directly available to a subscriber, eliminating the need to go through the telephone company (telco) business office.

In one embodiment, the system includes a processor (referred to herein as a tandem access controller) connected to the PSTN which would allow anyone to directly provision, that is to say set-up and make immediate changes to, the configuration of his or her phone line. In another embodiment, a tandem access controller (TAC) subsystem is connected internally to the PSTN in a local service area. The TAC provides features, selected by the subscriber, to all edge switches connected to the PSTN tandem switch. Connecting directly to the PSTN tandem switch (or embedding the system into the tandem switch) eliminates the signal degradation problems previously described.

In one embodiment, the system allows provisioning of features via the internet under direct control of the subscriber. Recently, several products have been introduced that provide a means of controlling features via the public internet. However, all these devices fall short in that they require the subscriber to obtain an "800" number or some other number that requires the subscriber to pay a toll charge each time a call is made. The system connects locally, so no toll charges are incurred.

The offered features are implemented by software programs run by the processing system.

The web-enhanced services in one embodiment of the invention coexist with and overlay the local phone service at the local level, thereby providing good economics and user interaction, single number access to multiple subscriber devices, connectivity without transmission impairments and true, direct 3rd-party call control.

The present system relies upon use of local telephone facilities thereby eliminating all the extra charges associated with making toll calls. It also allows the user to take advantage of number portability and keep his/her existing public phone number.

BRIEF DESCRIPTION OF THE DRAWINGS

FIG. 1 illustrates the tandem access controller (TAC) in one embodiment of the present invention connected to the exist-

4

ing PSTN tandem switch, the TAC providing features for the subscriber's telephone as requested by the subscriber via the web.

FIG. 2 illustrates a system similar to FIG. 1 but showing multiple tandem switches and TACs and also showing how the subscriber may, in addition to using the standard telephone, make phone calls using Voice Over IP via a conventional digital telephone.

FIG. 3 is a flowchart of one method that a person may use to set up a subscriber account and to designate features the subscriber would like for his/her telephone.

FIG. 4 is a flowchart of a method that can be performed by the TAC in response to the subscriber (or other service) controlling the TAC, using the web (or other packet-based system), to change the subscriber's telephone provisioning or perform another function, such as make a VoIP call.

FIG. 5 is a flowchart of a method that can be performed by the TAC in response to an inbound call to the subscriber.

FIG. 6 is a flowchart of a method performed by the subscriber and the TAC when the subscriber desires to make an outbound call via the web or using a conventional telephone.

FIG. 7 illustrates a system, using the TAC, that allows wireless cell phones to obtain the same provisioning options as the conventional telephones.

FIG. 8 illustrates a system, using the TAC, that allows fax and modem calls to benefit from the provisioning offered by the TAC.

FIG. 9 is a flowchart of possible scenarios using the caller ID based feature.

FIG. 10 is a flowchart of possible scenarios using the branch calling feature.

DETAILED DESCRIPTION OF THE INVENTION

FIG. 1 shows a tandem access controller (TAC) 10 that allows an authorized subscriber 12 to establish 3rd-party control criteria for calls to the subscriber's telephone 14 (having a "public" phone number that callers dial). In one embodiment, the TAC 10 is a programmed processor. The TAC 10 may use any combination of hardware, firmware, or software and, in one embodiment, is a conventional computer programmed to carry out the functions described herein.

The TAC 10 is connected to or inside the conventional PSTN tandem switch 16 such that calls may flow through the TAC 10 in the same manner as the existing PSTN tandem switch, except that additional 3rd-party features are applied to the call. As is well known, PSTN tandem switches are exchanges that direct telephone calls (or other traffic) to central offices 17, 18 or to other tandem switches. Details of the operation of the existing phone network may be found in the publication entitled "New Net SS7 Tutorial," by ADC Telecommunications, copyright 1999, incorporated herein by reference. Additional details may be found in the numerous books describing the PSTN.

The PSTN tandem switch 16 directs a first call (from the calling party 20 to the subscriber's phone 14 using the subscriber's public phone number) to the TAC 10, which in turn places a second call, subject to 3rd-party control information, to the subscriber's "private" phone number without yet terminating the first call. The TAC 10 is connected within the subscriber's local service area so calls from TAC 10 to the subscriber do not incur a toll. When the subscriber 12 terminates (or answers) the second call, the TAC 10 terminates the first call and connects it to the second call, thereby connecting the calling party 20 to the subscriber 12. Hence, the calling party essentially calls the TAC 10, using the subscriber's public phone number, and the TAC 10, after processing the

5

call using the selected features, calls the subscriber, as appropriate, using the subscriber's private phone number and connects the two calls. The process is transparent to the parties.

The TAC 10 is connected inside the PSTN in the sense that it is not an edge device such as a PBX or central office (CO) switch because it does not connect directly to subscribers. Rather, it redirects calls to subscribers. The TAC 10 provides intelligent interconnection between a calling party and a subscriber.

The reader should keep in mind that although only one tandem switch 16 is shown in FIG. 1, the invention will apply equally well to a network of tandem switches, as shown in FIG. 2. FIG. 2 also illustrates how the subscriber can make calls using voice over IP via a conventional digital telephone 21.

FIG. 1 illustrates the preferred method for an authorized subscriber to modify the 3rd-party control criteria by means of the world wide web 22 (and web server 23) using an internet browser. By "authorized" we mean a subscriber who is registered and has logged-in with appropriate security and password controls. The subscriber 12 interacts with the web 22 via the Internet to quickly and easily specify the enhanced 3rd-party call control features. Web 22 then relays this information, in appropriate form, to the TAC 10. Preferably, the link to the TAC 10 uses a secure protocol. Examples of features that can be selected by the subscriber include: conditional call blocking, call forwarding, call altering, time of day conditions, day of week conditions, follow-me, caller recognition/password, caller ID, call screening/retrieval from voice mail, speed dialing, interactive voice response, and speech recognition. Any other feature could be added. These features can be implemented in the TAC 10 using known software techniques since such features are known. Message outgoing call control includes: click-to-dial calling and group calling/messaging.

The invention may also include ivr/vm/voverip.

FIG. 1 uses a public internet portal connected via a data link to the TAC 10 or other interface system. As a registered subscriber, a user logs onto the portal (FIG. 3) and is granted access, allowing the user to make additions or changes to features such as speed calling, call forwarding, selection of such descriptors as time of day, busy status, caller ID status, etc. A user-friendly web page leads the subscriber through the various procedures and available features. The selections made by the subscriber are translated into provisioning data and transmitted to the TAC 10. The TAC 10 in turn keeps track of incoming and outgoing calls based on this information.

The subscriber can also program a set of the call control features via a telephone link in the event a data link connection is unavailable.

FIG. 4 is a flowchart of actions that may be taken by the TAC 10 in response to the subscriber (or other service) controlling the TAC, using the web or other packet-based system, to change the subscriber's telephone provisioning or perform another function, such as make a VoIP call.

FIG. 5 is a flowchart of actions taken by the TAC 10 in response to an inbound call (using the subscriber's public phone number) to the subscriber. Examples of some of the actions taken by the TAC 10 are:

- Receives SS7 data indicating an incoming call
- Stores phone numbers downloaded from provisioning system
- Charts identity of calling party
- Checks time of day
- Stores lists of numbers in groups used for processing incoming calls

6

Places outgoing calls in response to incoming calls according to information downloaded on the data link.

Incoming call data is received by the TAC 10 from the tandem switch 16. The TAC 10 processor checks calling and called numbers, class of service, time of day, number lists, etc. In some cases additional data is gathered from the calling party via a DSP (Digital Signal Processing) system and stored in the system memory. The DSP system is used to play call progress tones and voice announcements as required. Voice announcements can be played through the DSP system. In response to the call data, an outgoing call to the subscriber 12 may be placed back through the tandem switch 16 by TAC 10. The TAC 10 links the two calls and monitors the connection.

Information about the call may be collected by the TAC 10 and sent to the subscriber or a 3rd party for display. Such information may be the length of the call or information used to bill the subscriber for the use of the system. The provisioning system can also collect control information from a 3rd party and relay it back to the TAC 10, which will then affect the call accordingly.

FIG. 6 is a flowchart of actions taken by the subscriber 12 and the TAC 10 when the subscriber desires to make an outbound call via the web or using a conventional telephone. When using the web to place a call, the subscriber may simply click a name on the computer screen 26 using a mouse.

FIG. 7 illustrates a system, using the TAC 10, that allows wireless cell phones 28 to obtain the same provisioning options as the conventional telephones 14. A local cell 30 and a cell switch 32 are also shown in FIG. 7.

FIG. 8 illustrates a system, using the TAC 10, that allows fax and modem calls to benefit from the provisioning offered by the TAC 10. The TAC 10 may interface the ISP 36 through the web 22.

One embodiment of the invention allows a subscriber to view the current state of his/her telephone via the Internet. Internet is a term of art by which we mean an interconnection of packet switched networks. Prior to this system there was no way for a user to examine the status of a telephone line. Recently, several products have been introduced that provide a means of examining the voice message boxes.

An internet portal is connected via a data link to the TAC 10. When a user logs onto the internet portal and is granted access to an individual subscription, the user can examine the status of calls/features. This information is transmitted from the TAC 10 to the web portal and translated into user viewables. The TAC 10 keeps track of incoming and outgoing calls based on this information.

The TAC 10 may be implemented using conventional processor hardware. The connection to the tandem switch 16 may be as simple as a telephone circuit, since the TAC 10 receives an incoming call from a caller and processes the call. Devising the software/firmware use to control the TAC 10 is well within the capability of those skilled in the art since the various control features that can be made available are generally already known.

Certain advantages that can be obtained using the invention include the following:

- Web-Based Telecom Navigator
- Manage Incoming Call Control
- Conditional Call Blocking/Forwarding/Alerting
- Time-of-Day, Day-of-Week, Follow-Me, Caller Recognition/Password
- Caller ID, etc.
- Call Screening/Retrieval from Voice Mail
- Interactive Voice Response and Speech Recognition
- Manage Outgoing Call Control
- Click-to-Dial Calling

Group Calling and Messaging
 Web-Based Billing
 Web-Driven Personal Communications Management
 Cost-Effective Single Phone Number Access
 On-Line "Personal Digital Assistant"
 On-Line "Telcom Navigator"
 Inspired User Interaction
 Secure and Reliable Technology
 Cost-Effective Single Phone Number Access
 CLEC Status
 Free Local Calls, Incoming Calls (not 800 Toll Service)
 Retain Current Number (Local Number Portability)
 Low-Cost Calling Throughout LATA
 Flat-Rate Foreign Exchange
 Single Installation Covers Entire LATA
 VoIP Toll-Bypass
 Compatible With Existing Devices, Standards
 Standard DTMF and VoIP Phones
 Wireless Phones
 Standard Wired/Wireless and PIM Browsers
 Web-Based Personal Digital Assistant
 Centralized and Consistent Personal Data
 Build Once, Use Anywhere
 Private/Public Phone Directories and Calendars
 "Post-It" Style Annotation of Numbers
 Web Dialing
 Click-to-Dial from Web Pages, Directories, Calendars
 Multiple Phone List Management
 Unified Messaging
 Voice Mail Access, Prompts, Alert Via Web
 User Interaction
 Expected Behavior
 Compatible with Familiar Products (e.g. Palm Pilot)
 Commonality Between All Wired and Wireless
 Mode-Based Definition and Selection
 Vacation, Dinner Time, Go Away, Family Call Waiting
 Templates
 Learning Modes
 Persona-Based User Interaction Design
 Speech recognition
 Windows drag and drop
 Automatic Data Capture
 Build Phone List Based on Collected Usage Information
 Drag and Drop Into Lists
 Secure and Reliable Technology
 Separate Web-Site and Link Gateway
 No Direct External Access to Gateway
 Additional Security Layer
 No Denial-of-Service to Voice Links
 VoIP Link Degradation Detection
 Automatic Cutover to PSTN
 E-Commerce Security
 Billing Encryption Caller
 ID Based Call Routing

One advantage of using TAC 10 is its ability to enhance caller ID information. Caller ID is a common feature where a calling party's telephone number is transmitted to the called party's telephone so it can be displayed on a small display screen in the telephone. This caller ID information is provided by the calling party's central office switch. Signaling System No. 7 (SS7) is a global standard for telecommunications and defines the procedures and protocol by which network elements in the PSTN exchange information (including the caller ID) over the telephone network for call set up, routing, and control. In some telephone sets, including wireless telephones, the name of the caller associated with the telephone number is also displayed on the called party's display screen.

TAC 10 can use this automatically generated caller ID signal to provide an enhanced set of caller ID related features. One such feature is the association of the standard caller ID information with additional information about the caller stored in a memory addressed by TAC 10. The enhanced caller ID information provided through TAC 10 provides a valuable tool to the subscriber in handling incoming calls. The basic caller ID information, such as the caller's telephone number and name, can still be sent to the subscriber's phone and displayed in a conventional manner while the enhanced caller ID information may be displayed on the phone display or on the subscriber's computer monitor via the web.

The caller ID signals, pursuant to the SS7 protocol, are detected by TAC 10 when a calling party calls the subscriber using the subscriber's public telephone number, as previously described. TAC 10 then uses the basic caller ID data to address a look-up table (LUT) containing any additional information that the subscriber has entered into the LUT's memory locations for association with that caller ID data. FIG. 8 shows such a LUT 40 within or connected to TAC 10.

In one example, the subscriber may identify a prospective calling party's telephone number to TAC 10 via the Internet and then associate the number with any other information for storing in LUT 40. Such other information may be all the possible callers using the calling telephone, personal information regarding the calling party, billing information, business information, account numbers, past discussions with the caller, or any other information. When TAC 10 detects the caller ID signals, TAC 10 addresses LUT 40 and downloads the retrieved information to the subscriber's telephone display or to the subscriber's computer via the web. Since TAC 10 (including LUT 40) stores this additional information, the subscriber is not required to personally provide processing or memory devices for this feature.

Multiple subscribers use the same TAC 10 and LUT 40 but only the memory locations in LUT 40 authorized for access by a particular subscriber are available to that subscriber.

A subscriber may program TAC 10 using the various means described previously to perform any number of features on an incoming telephone call based upon the caller ID data. Such features include forwarding a call associated with that particular caller ID data to one or more other telephones, or blocking calls associated with that particular caller ID data. Such calls may be forwarded or blocked only at certain times or on certain days as requested by the subscriber. All of the other features previously described may also be applied based upon the caller ID.

When the calling party elects to block her caller ID information, displaying the caller's number and name on the subscriber's telephone may violate the privacy act, so such a restriction should be programmed into the system. However, TAC 10 may still use the caller ID information for various legal purposes. For example, the subscriber may not wish to receive phone calls from a particular phone number or calling party. The subscriber may transmit to TAC 10 the caller ID information (e.g., the telephone number and/or the name) and instruct TAC 10 to either forward the call, block the call, or transmit any additional information from LUT 40 to the subscriber's phone display or computer monitor for screening the caller.

If caller ID information does not exist, such as where the local telephone company does not offer caller ID, TAC 10, when receiving the incoming call, can transmit an automatic message to the caller to enter identification information. TAC 10 then uses that information to address LUT 40 to identify any associated information in LUT 40 for transmission to the subscriber. TAC 10, in a recorded or simulated voice, can

request the caller to enter her phone number via the telephone keypad. Alternatively, TAC can request that the caller speak her name or number, which would then be played to the subscriber or converted to text or a code by TAC 10 to address LUT 40. Alternatively, the caller can enter a personal identification number or any other type of code (e.g., the caller's name) via the keypad, which would identify the caller to TAC 10. Once obtained, the caller ID information entered can be used to route the incoming call via TAC 10 in any way programmed by the subscriber. Call routing can be based on time of day, the caller ID, any web input instructions, a direction by the calling party itself, or any other variable.

This technique is contrasted with 800-type services, which are reverse long distance services requiring the owner of the 800 number to pay for the incoming call. With 800 numbers, the caller ID must be unblocked to identify the amount of the toll. With the inventive technique, even blocked caller ID calls can result in information about the caller being transmitted to the subscriber or used by TAC 10 to selectively perform a function.

FIG. 9 is a flowchart of various scenarios that may be carried out using the caller ID feature.

In step 50 of FIG. 9, an incoming call is received by TAC 10, as previously described, by a calling party calling the subscriber's public telephone number. In all embodiments described herein, the end unit called may be a residential telephone or other communication device connected to the PSTN via a central office, such as a computer, fax machine, or other communication device. The services provided by TAC 10 may be for residential telephone service or for business telephone service.

In step 52, using the SS7 protocol, TAC 10 detects the caller ID signal (CID), if any. Even if the calling party has a blocked CID, the CID is still transmitted to TAC 10; however the blocked caller ID cannot be displayed on the called party's telephone. If the CID is detected, the process continues to steps 54 and 56, which determine whether the CID is associated with any data in a look-up table. Existing data in the look-up table associated with the CID indicates that the caller is a previous caller. If caller ID information is known without ever previously receiving a call from that party, the additional information can still be entered into the look-up table, and the calling party will be treated as not a new caller in step 54.

Assuming the caller has information stored in the look-up table, this additional information is retrieved by TAC 10 and displayed on a web page (step 58) that is accessible by the subscriber via the web. In addition, the caller's name and telephone number may also be displayed (step 60). The information may also be transmitted to the subscriber's telephone for display.

In step 62, TAC 10 performs any programmed function on the call, such as forwarding the call to the subscriber's private telephone number or another number.

The placing of the second call by TAC 10 causes the called phone to ring (step 64) as well as causes the CID and additional information to be available to the subscriber (step 66) on the subscriber's telephone display. When the subscriber answers the phone, TAC 10 completes the connection between the two parties.

The retrieved information from LUT 40 that is transmitted over the web may appear as a screen pop-up on the subscriber's monitor. This CID information can then be reviewed and edited to include new information about the caller provided during the call. The subscriber then downloads this edited information to TAC 10 so future calls from the same caller would display the new information.

In step 54 if it is determined that the CID information is not associated with any existing information in the look-up table, TAC 10 determines whether the CID is blocked (identified in the SS7 protocol) in step 68. If the CID is not blocked, then the CID information is transmitted to the subscriber's telephone when TAC 10 places the call to the subscriber's private number (or any other forwarding number), and the CID is displayed on the subscriber's phone.

In step 68, if it is determined that the CID is blocked, TAC 10 will prompt the caller, via a recorded message or a simulated voice, to press the appropriate touch tone buttons to unblock the CID (step 70). For example, TAC 10 may be programmed to detect that a "1" key is pressed by the caller to unblock CID and then treat the CID information as unblocked. Alternatively, the caller may be required to call back after pressing the proper touch tone keys to unblock the CID in a conventional way.

In step 72, if the CID is now unblocked, the CID is obtained from the caller in step 74. The process also goes to step 74 if, in step 52, the CID is not initially obtained.

In step 76, TAC 10 determines whether the CID signal has been provided by the calling party from either the automatic CID signals or from the caller manually entering the caller's telephone number, name, or PIN, as previously described. If yes, then in step 54 TAC 10 uses the CID information to determine whether the caller is a new caller, and the remainder of the process continues as previously described.

In step 72, if it is determined that the CID remains blocked after TAC 10 has prompted the caller to unblock the CID, then in step 74 it is determined by TAC 10 is step 77 (after reviewing the subscriber's programmed instructions) whether the subscriber is accepting blocked calls. If yes, TAC 10 then places a call to the subscriber's private number or any other number identified by the subscriber, and puts the blocked call through. The blocked CID information would not be transmitted to the subscriber's phone.

If the subscriber's instructions are to not accept blocked calls, then in step 78 the blocked call is not forwarded to the subscriber's phone, or the blocked call is sent to voice mail. Voice mail may be a memory internal to TAC 10, or TAC 10 may transmit a special code to the subscriber's phone that automatically causes the call to be routed to a private voice mail system.

As seen, as long as the caller ID data received by TAC 10 has information associated with it in the look-up table, the stored information can be transmitted to the subscriber even if the caller ID is blocked. Further, even blocked caller IDs can still be used by TAC 10 to perform a routing function on the call. The caller ID feature may be implemented by a software program run by the processing system in TAC 10.

Because the conventional blocked CID information provided by the phone company is never displayed to the subscriber, the tagging system does not violate the privacy act. Known features such as call trace (where CID is provided to law enforcement people), or call return (where the blocked caller can be called back) have established a legal precedent that it is ok to use blocked CID information for certain purposes as long as the caller ID is not disclosed to the called party.

Branch Calling

Branch calling is an enhanced telephone feature not believed to be provided on today's public telephone networks. This feature can be easily provided using TAC 10.

Branch calling is a technique where a caller places a first call intended for a called party to TAC 10. After receiving the call, TAC 10 looks up the call handling instructions programmed into TAC 10 by the subscriber via the web, via the

11

telephone, or via any other technique. One set of these instructions is branch calling, which instructs TAC 10 to simultaneously call any number of different telephone numbers programmed into TAC 10 by the subscriber. The called phone numbers may be any combination of local, long distance, or cellular numbers.

When a party answers one of the ringing lines, the answering party is connected to the calling party, and the other calls are abandoned.

For branch calling to operate in the most desirable manner, the system must detect that a call has been answered in order to terminate the calls to the other telephones (or other end units). Accordingly, some form of answer supervision must be present. Answer supervision is implemented inside the PSTN but generally not available to private networks (e.g., PABXs). Since SS7 signaling supports answer supervision, it is easy for this branch calling feature to be provided through TAC 10 since TAC 10 is connected inside the PSTN.

Prior art systems without answer supervision must call each forwarding number sequentially, whereby after a certain number of preprogrammed rings, the calling stops and the next number is called until someone answers the phone. Because a ringing time-out must occur before the next call can be tried, an unrealistically long delay can occur before the call is placed to the proper telephone and finally answered. In contrast, the present invention allows TAC 10 to ring all the numbers simultaneously so the call can be answered quickly.

It is desirable that the answer supervision signaling not be delayed so that the calling and called parties may be connected quickly when the call is answered and so that during the delay time two parties do not answer two different ringing phones.

FIG. 10 is a flowchart of some scenarios in branch calling, whereby an incoming call to TAC 10 causes TAC 10 to place at least two new calls simultaneously and, when one of these phones is answered, the remaining calls are abandoned.

In step 80 of FIG. 10, TAC 10 receives an incoming call.

In step 82, TAC 10 looks up the routing instructions for the DNIS (Dialed Number Identification Service) and caller ID (if any). The DNIS identifies the number that was called, and the caller ID (CID) identifies the calling telephone number and sometimes the caller. DNIS works by transmitting the touch tone digits to TAC 10. A subscriber for TAC 10 may program TAC 10, as previously described, to perform any number of functions based upon the DNIS number, the CID, the time of day, or based upon any other factor. Such instructions may be stored in a look-up table addressed by the subscriber's public phone number (identified by the DNIS number). Since multiple subscribers will be using the same TAC 10, TAC 10 needs to know what number was dialed in order to perform the function on the call selected by the subscriber.

In step 86, TAC 10 identifies the features to apply to the incoming call. If the instructions are to block the call, then TAC 10 blocks the call in step 87. In the present example, it is assumed that the feature the subscriber wants to apply is a branch calling feature where two telephone numbers are to be called by TAC 10.

In step 88, TAC 10 generates a ring back tone to the caller to indicate that a telephone is ringing.

In step 90, TAC 10 places a call to a first telephone number, which causes the called phone to ring (step 92). Parallel operations are performed for a second phone number in steps 93 and 95.

In step 96, it is determined by TAC 10 whether the first phone has been answered using answer supervision signaling provided by SS7 (step 98).

12

In response to the answer supervision signaling, TAC 10 abandons the other call to the second telephone (step 100).

In step 102, TAC 10 completes the phone call by connecting the calling party to the answered telephone. This process may be applied to other than telephones, such as computers or other types of communication equipment.

In step 96, if the call is not answered after the ring, it is determined whether the other telephone has been answered (step 104). If not, the two phones continue to ring.

If it is determined in step 104 that another telephone has been answered (i.e., the answer supervision signal has been received by TAC 10), the call to the first telephone is abandoned (step 106).

The same operation is performed with respect to the second telephone call in steps 108-113.

Any number of telephone calls may be simultaneously placed by TAC 10 in response to a branch calling instruction.

In step 86, if the instructions programmed by the subscriber are to block the call, then TAC 10 blocks the call in step 87.

While particular embodiments of the present invention have been shown and described, it will be obvious to those skilled in the art that changes and modifications may be made without departing from this invention in its broader aspects and, therefore, the appended claims are to encompass within their scope all such changes and modifications that fall within the true spirit and scope of this invention.

What is claimed is:

1. A method performed by a web enabled processing system including one or more web servers coupled to a call processing system serving as an intelligent interconnection between at least one packet network and a second network coupled to a switching facility of a telecommunications network, the telecommunications network comprising edge switches for routing calls from and to subscribers within a local geographic area and switching facilities for routing calls to other edge switches or other switching facilities local or in other geographic areas, the method for enabling voice communication from a calling party to a called party across both the packet network and the second network, the method comprising the steps of:

receiving call data which is associated with a call originated by the calling party via either the packet network or the second network, at the call processing system, the calling party using a communications device to originate the call for the purpose of initiating voice communication, the call processing system coupled to at least one switching facility of the telecommunications network via the second network, the call processing system processing the call across both the packet network and the second network to complete the call to the called party; and

establishing the voice communication between the calling party and the called party after the call is completed, across both the packet network and the second network.

2. A method as defined in claim 1, wherein either the calling or the called party is a subscriber of the web enabled processing system.

3. A method as defined in claim 2, further comprising the step of:

associating the call data with a calling feature, previously selected by the subscriber to be performed on the call, the calling feature being to forward the call to at least two communications devices; and simultaneously initiating at least two calls to at least two communications devices.

13

4. A method as defined in claim 3, wherein the at least two calls to the communications devices are any combination of local call, long distance call, cellular call, and VOIP call.

5. A method as defined in claim 3, wherein when one of the calls to the communications devices is answered, an answer supervision signal is transmitted to the call processing system, and the call processing system abandons the other calls.

6. A method as defined in claim 5, wherein the answer supervision is pursuant to the SS7 signaling protocol.

7. A method as defined in claim 2, wherein the call processing system is coupled to the switching facility, which is a PSTN tandem switch within the telecommunications network, which is a public switched telephone network (PSTN), and wherein receiving the call from a calling party comprises the steps of:

receiving call data which is associated with a first call through the tandem switch from the calling party intended for the subscriber after the calling party has entered a first telephone number, the first telephone number being the subscriber's public telephone number, the call processing system simultaneously initiating at least second and third calls using second and third telephone numbers different from the first telephone number.

8. A method as defined in claim 2, further comprising the step of:

identifying one or more control criteria associated with the subscriber, wherein the one or more control criteria had been previously provided to the web server, and completing the call in accordance with the control criteria associated with the subscriber and establishing the voice communication only in accordance with the control criteria.

9. A method as defined in claim 1, wherein the telecommunications network further comprises any one or more of a switched network, a packet-based network, and a wireless network.

10. A method as defined in claim 1, wherein the communications device is a digital device.

11. A method as defined in claim 1, wherein the web enabled processing system is implemented using a distributed architecture spanning at least two locations.

12. A method as defined in claim 1, wherein the web enabled processing system utilizes a programmed processor utilizing the TDM architecture.

13. A method as defined in claim 1, wherein the web enabled processing system utilizes a programmed processor utilizing packet switching.

14. A method as defined in claim 1, wherein the web enabled processing system utilizes a programmed processor utilizing a voice over IP (VoIP) architecture.

15. A method as defined in claim 1, wherein the call originated by the calling party via the second network is facilitated using VoIP.

16. A method as defined in claim 15, wherein the call is originated and completed using VOIP, but has at least one leg through the second network.

17. A method as defined in claim 1, wherein the call processing system is located within a local service area corresponding to the specified recipient.

18. A method as defined in claim 1, wherein the call processing system is configured as a tandem access controller.

19. A method as defined in claim 18, wherein the tandem access controller is coupled to and operates in conjunction with at least one of the switching facilities located within the telecommunications network.

14

20. A method as defined in claim 1, wherein at least a portion of the call is completed over a wireless link.

21. A method as defined in claim 1, wherein the communications device is any one of a wired telephone device, a computing device, a wireless device, a cellular device, a portable device with cellular capability, and an information appliance.

22. A method as defined in claim 1, wherein the telecommunications network comprises a network of switching facilities performing a class 4 switching function.

23. A method as defined in claim 1, wherein the telecommunications network comprises a network of class 4 switches.

24. A method as defined in claim 1, wherein either the calling party or the called party have a capability to request control criteria for execution by the web-enabled processing system to perform one or more of the following operations:

- a) Conditional Call Blocking/Forwarding
- b) Interactive Voice Response and Speech Recognition;
- c) Click-to-Dial Calling;
- d) Web-Based Billing;
- e) Retain Current Number (Local Number Portability);
- f) Web Dialing;
- g) Click-to-Dial from Web Pages.

25. A method as defined in claim 1, wherein the switching facility utilizes a TDM switching matrix.

26. A method as defined in claim 1, wherein the switching facility utilizes an ATM switching matrix.

27. A method as defined in claim 1, wherein the switching facility utilizes a crosspoint switching matrix.

28. A method as defined in claim 1, wherein the switching facility utilizes a VOIP switching matrix.

29. A method for routing calls from a calling party to a called party performed by a web-enabled processing system including one or more web servers coupled to a call processing system serving as an intelligent interconnection between at least one packet network and a circuit-switched network in a telecommunications network, the circuit-switched network comprising edge switches for routing calls from and to subscribers within a local geographic area and switching facilities for routing calls to other edge switches or other switching facilities local or in other geographic areas, the method for enabling voice communication from the calling party to the called party across both the packet network and the circuit-switched network, the method comprising the steps of:

receiving call data which is associated with a call originated by the calling party via the packet network, at the call processing system, the calling party using a communications device to originate the call for the purpose of initiating the voice communication, the call processing system coupled to at least one switching facility of the circuit-switched network, the call processing system processing the call across at least one packet network and the circuit-switched network to connect the call to the called party; and

establishing the voice communication between the calling party and the called party after the call is connected, across both the packet network and the circuit-switched network.

30. A method as defined in claim 29, wherein either the calling party or the called party is a subscriber of the web-enabled processing system.

31. A method as defined in claim 30, wherein the web-enabled processing system is configured to perform enhanced routing operations, further comprising the steps of:

15

facilitating selection of at least one calling feature by the subscriber, the web-enabled processing system configured to perform the steps of:

upon receiving the call from the calling party, using the communications device to implement a calling feature previously designated by the subscriber via the web server;

placing at least two calls simultaneously to at least two different communications devices previously designated by the subscriber;

detecting that the call has been answered at one of the communications devices; and

in response to the detecting, abandoning other calls to the remaining one or more communications devices and establishing a connection between the calling party's communications device and the answered communications device.

32. A method as defined in claim 30, wherein the subscriber is a subscriber of residential telephone service.

33. A method as defined in claim 30, wherein the subscriber is a subscriber of business telephone service.

34. A method as defined in claim 29, wherein the switching facility utilizes a TDM switching matrix.

35. A method as defined in claim 29, wherein the switching facility utilizes an ATM switching matrix.

36. A method as defined in claim 29, wherein the switching facility utilizes a crosspoint switching matrix.

37. A method as defined in claim 29, wherein the switching facility utilizes a VOIP switching matrix.

38. A method performed by a web-enabled processing system including one or more web servers coupled to a call processing system serving as an intelligent interconnection between at least one circuit-switched network and a packet network in a telecommunications network, the circuit-switched network comprising edge switches for routing calls from and to subscribers within a local geographic area and switching facilities for routing calls to other edge switches or other switching facilities local or in other geographic areas, the method for enabling voice communication from a calling party to a called party across both the circuit-switched network and a packet network, the method comprising the steps of:

receiving call data which is associated with a call originated by the calling party via the circuit-switched network, at the call processing system, the calling party using a communications device to originate the call for the purpose of initiating voice communication, the call processing system coupled to at least one switching facility of the circuit-switched network, the call processing system processing the call across the circuit-switched network and the packet network to complete the call to the called party; and

establishing the voice communication between the calling party and the called party after the call has been completed, across both the circuit-switched network and the packet network.

39. A method as defined in claim 38, wherein either the calling party or the called party is a subscriber of the web-enabled processing system.

40. A method as defined in claim 39, further comprising the step of:

associating the call data with a calling feature, previously selected by the subscriber to be performed on the call, the calling feature being to forward the call to at least two communications devices; and

simultaneously initiating at least two calls to at least two communications devices.

16

41. A method as defined in claim 40, wherein the at least two calls to the communications devices are any combination of local call, long distance call, cellular call, and VOIP call.

42. A method as defined in claim 40, wherein one of the calls to the communications devices is answered, an answer supervision signal is transmitted to the processing system, and the processing system abandons the other calls.

43. A method as defined in claim 42, wherein the answer supervision signal is pursuant to the SS7 signaling protocol.

44. A method as defined in claim 39, wherein the call processing system is coupled to the switching facility, which is a PSTN tandem switch within the telecommunications network, which is a public switched telephone network (PSTN), and wherein receiving call data which is associated with a call from a calling party comprises the steps of:

receiving call data which is associated with a first call through the tandem switch from the calling party intended for the subscriber after the calling party has entered a first telephone number, the first telephone number being the subscriber's public telephone number, said processing system simultaneously initiating at least second and third calls using second and third telephone numbers different from the first telephone number.

45. A method as defined in claim 39, further comprising the step of:

identifying one or more control criteria previously associated with the subscriber, wherein the one or more control criteria was entered via the web server, and completing the call in accordance with the control criteria associated with the subscriber and establishing the voice communication only in accordance with the control criteria.

46. A method as defined in claim 38, wherein the telecommunications network further comprises any one or more of a circuit-switched network, a packet-based network, and a wireless network.

47. A method as defined in claim 38, wherein the communications device is a digital device.

48. A method as defined in claim 38, wherein the web-enabled processing system is implemented using a distributed architecture spanning at least two locations.

49. A method as defined in claim 38, wherein the web-enabled processing system utilizes a programmed processor utilizing the TDM architecture.

50. A method as defined in claim 38, wherein the web-enabled processing system utilizes a programmed processor utilizing packet switching.

51. A method as defined in claim 38, wherein the web-enabled processing system utilizes a programmed processor utilizing a voice over IP (VoIP) architecture.

52. A method as defined in claim 38, wherein the call originated by the calling party via the packet network is facilitated using VoIP.

53. A method as defined in claim 38, wherein the call is originated and completed using VOIP, but has at least one leg through the circuit-switched network.

54. A method as defined in claim 38, wherein the call processing system is located within a local service area corresponding to the specified recipient.

55. A method as defined in claim 38, wherein the call processing system is designed to be configured as a tandem access controller.

56. A method as defined in claim 55, wherein the tandem access controller is designed to be coupled to and operates in conjunction with at least one of the switching facilities located within the communication network.

57. A method as defined in claim 38, wherein at least a portion of the call is completed over a wireless link.

Ex. 1001

YMax Corporation

Page 24 of 28

58. A method as defined in claim **38**, wherein the communications device is any one of a wired telephone device, a computing device, a wireless device, a cellular device, a portable device with cellular capability, and an information appliance.

59. A method as defined in claim **38**, wherein the telecommunications network comprises a network of switching facilities performing a class 4 switching function.

60. A method as defined in claim **38**, wherein the telecommunications network comprises a network of class 4 switches.

61. A method as defined in claim **38**, wherein either the calling party or the called party have a capability to request control criteria for execution by the web-enabled processing system to perform one or more of the following operations:

- a) Conditional Call Blocking/Forwarding/Alerting;
- b) Interactive Voice Response and Speech Recognition;
- c) Click-to-Dial Calling;
- d) Group Calling and Messaging;
- e) Web-Based Billing;
- f) Retain Current Number (Local Number Portability);
- g) Standard DTMF and VoIP Phones;
- h) Web Dialing;
- i) Click-to-Dial from Web Pages, Directories, Calendars.

62. A method as defined in claim **38**, wherein the tandem switching facility utilizes an ATM switching matrix.

63. A method as defined in claim **38**, wherein the switching facility utilizes a crosspoint switching matrix.

64. A method as defined in claim **38**, wherein the switching facility utilizes a VOIP switching matrix.

65. A communication network with an improved architecture comprising a web-enabled processing system including one or more web servers designed to be coupled to a call processing system serving as an intelligent interconnection between at least one circuit-switched network and a packet network in a telecommunications network, the circuit-switched network comprising edge switches for routing calls from and to subscribers within a local geographic area and switching facilities for routing calls to other edge switches or other switching facilities local or in other geographic areas, the communication network designed to enable voice communication from a calling party to a called party across both the circuit-switched network and a packet network, the communication network comprising:

an interface capability within the web-enabled processing system for receiving call data which is associated with a call originated by the calling party via either the packet network or the circuit-switched network, the call originated by the calling party via a communications device for the purpose of initiating voice communication, the web-enabled processing system designed to be coupled to at least one switching facility of the circuit-switched network;

a call processing capability within the web-enabled processing system for processing the call across the packet network and the circuit-switched network to complete the call to the called party; and

a capability within the web-enabled processing system for establishing the voice communication between the calling party and the called party after the call is completed, across both the packet network and the circuit-switched network.

66. A communication network as defined in claim **65**, wherein either the calling party or the called party is a subscriber of the web-enabled processing system.

67. A communication network as defined in claim **66**, wherein the interface capability is designed to associate the

call data with a calling feature, previously selected by the subscriber to be performed on the call, the calling feature being to forward the call to at least two communication devices; and wherein the interface capability is designed to simultaneously initiate at least two calls to at least two communications devices.

68. A communication network as defined in claim **67**, wherein the at least two calls to the communications devices can be any combination of local call, long distance call, cellular call, and VOIP call.

69. A communication network as defined in claim **67**, wherein when one of the calls to the communications devices is answered, an answer supervision signal is transmitted to the processing system, and the processing system abandons the other calls.

70. A communication network as defined in claim **69**, wherein the answer supervision signal is pursuant to the SS7 signaling protocol.

71. A communication network as defined in claim **65**, wherein the call processing system is designed to be coupled to the switching facility, which is a PSTN tandem switch within the telecommunications network, and wherein the interface capability is designed to receive a call from the calling party by receiving call data which is associated with a first call through the tandem switch from the calling party intended for the subscriber after the calling party has entered a first telephone number, the first telephone number being the subscriber's public telephone number, and the call processing system is designed to simultaneously place at least second and third calls using second and third telephone numbers different from the first telephone number.

72. A communication network as defined in claim **71**, wherein the subscriber's public telephone number can be selected via the web server.

73. A communication network as defined in claim **71**, wherein the web-enabled processing system is designed to be configured to accept one or more control criteria previously associated with the subscriber, wherein the subscriber has the capability to request the one or more control criteria via the web server, and wherein the web-enabled processing system is designed to be configured to complete the call in accordance with the control criteria associated with the subscriber and to establish the voice communication only in accordance with the control criteria.

74. A communication network as defined in claim **65**, wherein the telecommunications network further comprises any one or more of a switched network, a packet-based network, and a wireless network.

75. A communication network as defined in claim **65**, wherein the communications device is a digital device.

76. A communication network as defined in claim **65**, wherein the web-enabled processing system is designed to be implemented using a distributed architecture spanning at least two locations.

77. A communication network as defined in claim **65**, wherein the web-enabled processing system utilizes a programmed processor utilizing the TDM architecture.

78. A communication network as defined in claim **65**, wherein the web-enabled processing system utilizes a programmed processor utilizing packet switching.

79. A communication network as defined in claim **65**, wherein the web-enabled processing system utilizes a programmed processor utilizing a voice over IP (VoIP) architecture.

80. A communication network as defined in claim **65**, wherein the call originated by the calling party via the packet network is facilitated using VoIP.

19

81. A communication network as defined in claim **80**, wherein the call is originated and completed using VOIP, but has at least one leg through the circuit-switched network.

82. A communication network as defined in claim **80**, wherein the call processing system is designed to be located within a local service area corresponding to the specified recipient.

83. A communication network as defined in claim **80**, wherein the call processing system is designed to be configured as a tandem access controller.

84. A communication network as defined in claim **83**, wherein the tandem access controller is designed to be coupled to and to operate in conjunction with at least one of the switching facilities located within the telecommunications network.

85. A communication network as defined in claim **80**, wherein at least a portion of the call is completed over a wireless link.

86. A communication network as defined in claim **80**, wherein the communications device is any one of a wired telephone device, a computing device, a wireless device, a cellular device, a portable device with cellular capability, and an information appliance.

87. A communication network as defined in claim **80**, wherein the telecommunications network comprises a network of switching facilities performing a class 4 switching function.

88. A communication network as defined in claim **80**, wherein the telecommunications network comprises a network of class 4 switches.

89. A communication network as defined in claim **80**, wherein either the calling party or the called party have a capability to request control criteria for execution by the web-enabled processing system to perform one or more of the following operations:

- a) Conditional Call Blocking/Forwarding/Alerting;
- b) Interactive Voice Response and Speech Recognition;
- c) Click-to-Dial Calling;
- d) Web-Based Billing;
- e) Retain Current Number (Local Number Portability);
- f) Standard DTMF and VoIP Phones;
- g) Web Dialing;
- h) Click-to-Dial from Web Pages, Directories.

90. A communication network as defined in claim **65**, wherein the switching facility utilizes a TDM switching matrix.

91. A communication network as defined in claim **65**, wherein the switching facility utilizes an ATM switching matrix.

92. A communication network as defined in claim **65**, wherein the switching facility utilizes a crosspoint switching matrix.

93. A communication network as defined in claim **65**, wherein the tandem switch utilizes a VOIP switching matrix.

94. A communication network comprising a web-enabled processing system including one or more web servers coupled to a call processing system serving as an intelligent interconnection between at least one circuit-switched network and a packet network in a telecommunications network, the circuit-switched network comprising edge switches for routing calls from and to subscribers within a local geographic area and tandem switches for routing calls to other edge switches or other tandem switches local or in other geographic areas, the communication network for enabling voice communication from a calling party to a called party across both the circuit-switched network and a packet network, the communication network comprising:

20

an interface capability within the call processing system for receiving call data which is associated with a call originated by the calling party via either the circuit-switched network or the packet network, the call originated by the calling party via a communications device for the purpose of initiating voice communication, the call processing system coupled to at least one tandem switch of the circuit-switched network;

a call processing capability within the call processing system for processing the call across the circuit-switched network and at least one packet network to complete the call to the called party; and

a capability within the web-enabled processing system for establishing the voice communication between the calling party and the called party after the call is completed, across both the circuit-switched network and the at least one packet network.

95. A communication network as defined in claim **94**, wherein either the calling party or the called party is a subscriber of the web-enabled processing system.

96. A communication network as defined in claim **95**, wherein the subscriber's public telephone number is selected via the web server.

97. A communication network as defined in claim **95**, wherein the interface capability associates the call data with a calling feature, previously selected by the subscriber to be performed on the call, the calling feature being to forward the call to at least two communications devices and wherein the interface capability simultaneously initiates at least two calls to at least two communications devices.

98. A communication network as defined in claim **97**, wherein the at least two calls to the communications devices are any combination of local call, long distance call, cellular call, and VOIP call.

99. A communication network as defined in claim **97**, wherein when one of the calls to the communications devices is answered, an answer supervision signal is transmitted to the processing system, and the processing system abandons the other calls.

100. A communication network as defined in claim **99**, wherein the answer supervision is pursuant to the SS7 signaling protocol.

101. A communication network as defined in claim **95**, wherein the call processing system is coupled to the tandem switch, which is a PSTN tandem switch within the telecommunications network, which is a public switched telephone network (PSTN), and wherein the interface capability receives the call data through the tandem switch from the calling party intended for the subscriber after the calling party has entered a first telephone number, the first telephone number being the subscriber's public telephone number, and the call processing system simultaneously initiating at least second and third calls using second and third telephone numbers different from the first telephone number.

102. A communication network as defined in claim **95**, wherein the web-enabled processing system is configured to accept one or more control criteria previously associated with the subscriber, wherein the subscriber has the capability to request the one or more control criteria via the web server, and wherein the web-enabled processing system is configured to complete the call in accordance with the control criteria associated with the subscriber and to establish the voice communication only in accordance with the control criteria.

103. A communication network as defined in claim **94**, wherein the telecommunications network further comprises any one or more of a switched network, a packet-based network, and a wireless network.

21

104. A communication network as defined in claim **94**, wherein the communications device is a digital device.

105. A communication network as defined in claim **94**, wherein the web-enabled processing system is implemented using a distributed architecture spanning at least two locations.

106. A communication network as defined in claim **94**, wherein the web-enabled processing system utilizes a programmed processor utilizing the TDM architecture.

107. A communication network as defined in claim **94**, wherein the web-enabled processing system utilizes a programmed processor utilizing packet switching.

108. A communication network as defined in claim **94**, wherein the web-enabled processing system utilizes a programmed processor utilizing a voice over IP (VoIP) architecture.

109. A communication network as defined in claim **94**, wherein the call originated by the calling party via the packet network is facilitated using VoIP.

110. A communication network as defined in claim **109**, wherein the call is originated and completed using VOIP, but has at least one leg through the circuit-switched network.

111. A communication network as defined in claim **109**, wherein the web-enabled processing system is located within a local service area corresponding to the specified recipient.

112. A communication network as defined in claim **109**, wherein the web-enabled processing system is configured as a tandem access controller.

113. A communication network as defined in claim **112**, wherein the tandem access controller is coupled to and operates in conjunction with at least one of the tandem switches located within the telecommunications network.

114. A communication network as defined in claim **109**, wherein at least a portion of the call is completed over a wireless link.

115. A communication network as defined in claim **109**, wherein the communications device is any one of a wired telephone device, a computing device, a wireless device, a cellular device, a portable device with cellular capability, and an information appliance.

116. A communication network as defined in claim **109**, wherein the telecommunications network comprises a network of Tandem switches performing a class 4 switching function.

117. A communication network as defined in claim **109**, wherein the telecommunications network comprises a network of class 4 switches.

118. A communication network as defined in claim **109**, wherein either the calling party or the called party have a capability to request control criteria for execution by the web-enabled processing system to perform one or more of the following operations:

- a) Conditional Call Blocking/Forwarding/Alerting;
- b) Interactive Voice Response and Speech Recognition;
- c) Click-to-Dial Calling;
- d) Web-Based Billing;
- e) Retain Current Number (Local Number Portability);
- f) Standard DTMF and VoIP Phones;
- g) Web Dialing;
- h) Click-to-Dial from Web Pages, Directories.

119. A communication network as defined in claim **94**, wherein the tandem switch utilizes a TDM switching matrix.

120. A communication network as defined in claim **94**, wherein the tandem switch utilizes an ATM switching matrix.

121. A communication network as defined in claim **94**, wherein the tandem switch utilizes a crosspoint switching matrix.

22

122. A communication network as defined in claim **94**, wherein the tandem switch utilizes a VOIP switching matrix.

123. A communication network as defined in claim **38**, wherein the switching facility utilizes a TDM switching matrix.

124. A method as defined in claim **1** wherein the one or more web servers coupled to the call processing system are coupled through a data base.

125. A communication network as defined in claim **29** wherein the one or more web servers coupled to the call processing system are coupled through a data base.

126. A communication network as defined in claim **38** wherein the one or more web servers coupled to the call processing system are coupled through a data base.

127. A communication network as defined in claim **65** wherein the one or more web servers designed to be coupled to the call processing system are designed to be coupled through a data base.

128. A communication network as defined in claim **94** wherein the one or more web servers coupled to the call processing system are coupled through a data base.

129. A method as defined in claim **1**, wherein the call data includes a call request.

130. A method as defined in claim **29**, wherein the call data includes a call request.

131. A method as defined in claim **38**, wherein the call data includes a call request.

132. A method as defined in claim **65**, wherein the call data includes a call request.

133. A method as defined in claim **94**, wherein the call data includes a call request.

134. A method as defined in claim **1**, wherein the call data includes a telephone number.

135. A method as defined in claim **29**, wherein the call data includes a telephone number.

136. A method as defined in claim **38**, wherein the call data includes a telephone number.

137. A method as defined in claim **65**, wherein the call data includes a telephone number.

138. A method as defined in claim **94**, wherein the call data includes a telephone number.

139. A method as defined in claim **1**, wherein the call data includes an IP address.

140. A method as defined in claim **29**, wherein the call data includes an IP address.

141. A method as defined in claim **65**, wherein the call data includes an IP address.

142. A method as defined in claim **94**, wherein the call data includes an IP address.

143. A method of providing an intelligent interconnection between a first communication network and a second communication network, comprising:

receiving at a controller call data which is associated with a first call via a first communication network;

accessing control criteria by the controller based upon the call data;

initiating a second call via a second communication network by the controller using the call data and the control criteria, wherein at least one of the first and the second communication networks is a voice over IP (VOIP) network; and

enabling communication between the first call and the second call by the controller.

144. A method as defined in claim **143**, wherein the call data includes a call request.

145. A method as defined in claim **143**, wherein the call data includes a telephone number.

23

146. A method as defined in claim 143, wherein the call data includes an IP address.

147. A method as defined in claim 143, wherein the call data includes a VOIP signaling message.

148. A method as defined in claim 143, wherein the control criteria includes security measures.

149. A method as defined in claim 143, wherein the control criteria includes a selection of a telephone number.

150. A method as defined in claim 143, wherein the control criteria includes feature selection.

151. A method as defined in claim 148, wherein the security measures include call logging.

152. A method as defined in claim 148, wherein the security measures include web based billing.

153. A method as defined in claim 148, wherein the security measures include the prevention of denial of service attacks.

154. A method as defined in claim 148, wherein the security measures include authentication of the calling party.

155. A method as defined in claim 148, wherein the security measures include no direct access to a gateway.

156. A method as defined in claim 148, wherein the security measures include conditional call blocking

157. A method as defined in claim 143, wherein the control criteria is supplied via a packet interface.

158. The method of claim 143, wherein the communication between the first call and the second call is routed through the controller.

159. The method of claim 143, wherein the communication between the first call and the second call is enabled via an external device.

160. The method of claim 143, wherein the controller comprises a distributed architecture spanning multiple discrete devices.

161. The method of claim 143, where one of the first and the second communication networks is coupled to a switching facility of a network comprising:

- edge switches for routing calls from and to subscribers within a local geographic area, and
- switching facilities for routing calls to other edge switches or other switching facilities local or in other geographic areas.

162. The method of claim 143, wherein the second call is a call leg.

163. A controller for use between a first communication network and a second communication network, the controller including circuitry and/or software for:

- receiving call data which is associated with a first call via a first communication network;
- accessing control criteria based upon the call data;

24

initiating a second call via the second communication network, using the call data and the control criteria, wherein at least one of the first and the second communication networks is a voice over IP (VOIP) network; and enabling communication between the first call and the second call.

164. The controller of claim 163, wherein one of the first and the second communication networks is the public switched telephone network (PSTN).

165. The controller of claim 163, wherein the controller is configured to enable the communication between the first call and the second call by routing the communication through the controller.

166. The controller of claim 163, wherein the controller is configured to enable the communication between the first call and the second call through an external device.

167. The controller of claim 163, wherein the controller comprises a distributed architecture spanning multiple discrete devices.

168. The controller of claim 163, wherein the control criteria includes security measures.

169. The controller of claim 168, wherein the security measures include call logging.

170. The controller of claim 168, wherein the security measures include web based billing.

171. The controller of claim 168, wherein the security measures include the prevention of denial of service attacks.

172. The controller of claim 168, wherein the security measures include authentication of the calling party.

173. The controller of claim 168, wherein the security measures include no direct access to a gateway.

174. The controller of claim 168, wherein the security measures include conditional call blocking

175. The controller of claim 168, wherein the control criteria is supplied via a packet interface.

176. The controller of claim 163, wherein the call data includes a call request.

177. The controller of claim 163, wherein the call data includes a telephone number.

178. The controller of claim 163, wherein the call data includes an IP address.

179. The controller of claim 163, wherein the call data includes a VOIP signaling message.

180. The controller of claim 163, wherein the control criteria includes a selection of a telephone number.

181. The controller of claim 163, wherein the control criteria includes feature selection.

182. The controller of claim 163, wherein the second call is a call leg.

* * * * *