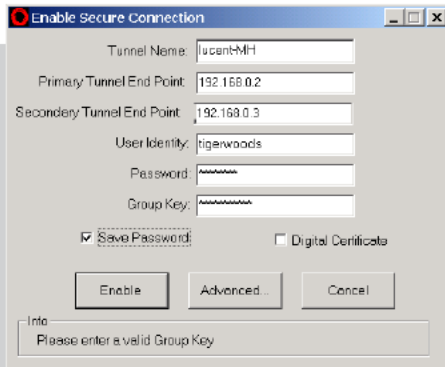


Lucent IPsec Client Remote Access IP VPN Solution



Lucent IPsec Client software lets you provide high-value remote access VPN services for telecommuters and mobile workers with PCs running Microsoft® Windows® operating systems. Unlike competitive products, the Lucent IPsec Client is expressly built to support carrier-managed IP services. It combines standards-based IP Security (IPsec) features, a built-in “personal firewall,” and centralized management to deliver a totally secure, scalable solution that is easy to install, administer, and use.

Applications

- Managed VPN services
- Remote private intranet access
- Private extranet access
- Public Internet access

Features

- Integral IP security: stateful firewall, strong packet encryption, robust authentication options
- Built-in “personal firewall” provides complete protection, even for always-on cable and DSL connections
- Completely integrated, centralized management options with Lucent Security Management Server (LSMS) software and VPN Firewall Brick® hardware
- Automatic security policy profile download at user log-in
- Detailed client status logs for accounting and troubleshooting
- Runs on all Windows platforms
- Intuitive graphical user interface (GUI)
- Online help with comprehensive contents, index, and search capabilities
- Interoperable with full Lucent IP services portfolio

Benefits

- **Quick and simple implementation**—complete, fully integrated solution; point-and-click installation; “near-zero” configuration
- **Connection versatility**—supports any connection mode: dial-up modem, WAN router, DSL, cable, wireless link
- **Streamlined VPN administration**—centrally provisioned and managed for large-scale remote access services
- **Cost-saving flexibility**—Interoperable with Lucent IP services solutions spanning SOHO to data center to central office requirements; ensures the right solution at the right price/performance point
- **Carrier-grade availability**—automatic failover to secondary tunnel endpoint
- **Ease of use**—user-friendly GUI; near-effortless session initiation; online help

Lucent Technologies
Bell Labs Innovations



Lucent IPSec Client Technical Specifications

1. Platforms

Windows 98/SE, Windows NT®, Windows ME®, Windows 2000, Windows XP

2. Interoperability

Lucent VPN Firewall Bricks®, Access Point® IP services routers; not all IPSec Client management features currently available with IP services routers

3. Connection Technologies

Dial-up modem, DSL/ADSL, cable modem, wireless link or various NIC and PCMCIA cards

4. Supported Standards

IPSec Encapsulating Security Payload (ESP) with DES and Triple-DES

IPSec Authentication Header (AH) with HMAC-MD5 and HMAC SHA-1 authentication
Diffie-Helman Group 1 and Group 2

IPComp (LZS compression)

X.509

PKCS #12

5. User Authentication

Local passwords, RADIUS, SecurID, X.509 digital certificates with
Entrust CA PKI and Verisign CA PKI

Entrust secure USB tokens

PKI Certificate requests (PKCS 12)

CAPI Store Integration

Automatic LDAP certificate retrieval

6. RADIUS Parameter Download

User-specific parameters configurable in administrator's RADIUS database applicable to IPSec Client user tunnels:

– Local Presence address

– Primary/Secondary DNS

– Primary/Secondary WINS

– Login Timeout

– Idle Timeout

– User Group

7. Notifications

Delivers administrator-specified message when tunnel established; must be acknowledged to continue

8. Software Upgrade Management

Notifies when Client upgrade available; single click upgrades IPSec Client software with newer version

9. Logging

Maintains local logs of connection attempts, including detailed IKE and IPSec negotiation

10. Tray Icon

Indicates tunnel activity, firewall setting in effect and provides continuous traffic statistics

11. DNS/WINS

Automatically configures local primary and secondary DNS (Domain Name Server) and WINS (Windows Information Name Server) addresses

12. Windows Domain Authentication

Can automatically log users to a remote Windows Domain; when authenticated, user can access any configured domain resources, including file and print servers

13. Custom Branding

Customizes the IPSec Client GUI with customer-specific images and text, both in installation process and runtime software

14. Personal Firewall

Includes a stateful personal firewall

Configurable for active and inactive tunnels; active tunnel configuration controlled by administrator; inactive tunnel configuration controlled by end-user

Configurations:

- Block all
- Pass All
- Pass only Client-initiated (outbound sessions only)

15. UDP Encapsulation of IPSec

Allows a telecommuter using an Internet Service Provider that assigns a private address and performs NAT on outbound connections, to transparently use the IPSec Client

For non-IPSec aware PAT devices, tunnels IPSec inside User Datagram Protocol (UDP) packets; repackages the IPSec packet into a new UDP packet destined to the Tunnel End Point and UDP port specified by the tunnel administrator

16. Local Presence

Assigns a local network address to the IPSec Client user's PC

Allows complex connections, such as X-Windows, to be directed back from other hosts to the client host, using established network routing paths

Assigns local addresses using a local pool managed by the LSMS, or one-at-a-time using the RADIUS parameter download feature

17. Split Tunneling

Permits simultaneous clear-text and encrypted traffic; system administrator configures all personal firewall settings and endpoint IP network behind tunnel; can disallow clear-text traffic entirely

18. High Availability

Can be configured and saved with a number of tunnels

Each tunnel can have its own backup tunnel endpoint, in case the primary is not reachable

19. Scriptable Command Line Interface

Allows full external script control of Client tunnel set-up and tear-down

20. Mobile IP Support

Along with IPUnplugged Mobile IP Client, Lucent IPSec Client supports seamless and secure VPN tunnel in the Mobile IP environments.

Ordering Information

Lucent IPSec Client 100-User License	Part Number 300745940
Lucent IPSec Client 500-User License	Part Number 300745957
Lucent IPSec Client 1,000-User License	Part Number 300745965
Lucent Security Management Server	See LSMS for ordering details

To learn more, please contact your dedicated Lucent Technologies representative, authorized reseller, or sales agent. You can also visit our web site at www.lucent.com/security.

This document is provided for planning purposes only and does not create, modify, or supplement any warranties which may be made by Lucent Technologies relating to the products and/or services described herein. The publication of information contained in this document does not imply freedom from patent or other protective rights of Lucent Technologies or other third parties.

VPN Firewall Brick and Access Point are registered trademarks of Lucent Technologies.

Microsoft, Windows, Windows NT, and Windows ME are registered trademarks of Microsoft Corporation.

Copyright © 2005
Lucent Technologies Inc.
All rights reserved

IPSec v7.0.0

Lucent Technologies
Bell Labs Innovations

